

20 Palmerston Place, Coomera, Qld 4209



House For Sale

Saturday, 15 June 2024

20 Palmerston Place, Coomera, Qld 4209

Bedrooms: 4

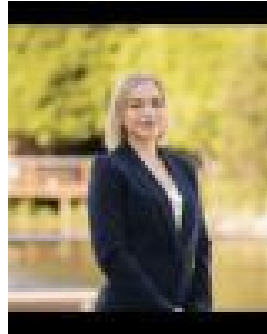
Bathrooms: 1

Parkings: 1

Type: House



Simon Finlayson
0756211507



Sydney Johnson
0424885527

Offers Over \$699,000

Discover the charm and convenience of single level living at 20 Palmerston Place, Coomera. This delightful 4 bedroom, 1.5 bathroom home offers a perfect blend of comfort, style, and low maintenance living. Four generously sized bedrooms, each with built in wardrobes and ceiling fans, provide ample storage and comfort for the whole family. The heart of the home features an open plan kitchen, living, and dining area that flows seamlessly, perfect for modern family living and entertaining. Enjoy cooking in the sleek, well appointed kitchen with plenty of storage and bench space. Step outside to the expansive undercover entertainment area, ideal for alfresco dining and gatherings with friends and family. The backyard is designed for easy care, allowing you to spend more time enjoying your home and less time on upkeep. The main bathroom is elegantly appointed, and an additional powder room provides extra convenience. Secure parking for one vehicle is available in the single car garage, with additional driveway and off street parking options. Stay comfortable year round with air conditioning in the main living areas. Genesis Estate residents also benefit from an onsite clubhouse with gymnasium, cinema, pool, business centre and BBQs. Community parks, playgrounds and the Coomera River are also close by, or meander the 6kms of walking trails within the estate. Westfield Coomera is 7 minutes by car, or stock up on supplies at nearby Coomera East or Red Edge shopping centres. Well regarded private and public schools are within easy reach, plus access the Motorway quickly, making travel to Brisbane or the southern Gold Coast a breeze. Situated near the walking tracks and parks, with frequent visits from ducks and local wildlife, adding a touch of nature to your everyday life. Whether you're a growing family, a first time buyer, or looking to downsize, 20 Palmerston Place is the perfect place to call home. Don't miss this opportunity to secure a beautiful, low maintenance home in a prime location. Contact us today to arrange a viewing!

Features Include:

- Located in the esteemed Genesis Estate
- Four bedrooms with built in robes and ceiling fans
- Modern kitchen with stone benchtops & electric cooktop
- Open plan kitchen, living and dining area
- Main bathroom with stone vanity, shower, bath and toilet
- Powder room near living area
- Expansive undercover outdoor area
- Supremely central location, 5km from Westfield Coomera and close to schools
- Easy access to public transport, internationally renowned theme parks and the M1 Pacific Motorway
- Approx. 20 minutes to Gold Coast beaches, with multiple Coomera River boat ramps nearby
- Resident access to Genesis Estate clubhouse with gym, cinema, business centre, pool and BBQ area
- Genesis Estate 24-hour onsite & roaming security
- Council Rates are approximately \$2,000 per annum
- Water Rates are approximately \$1,600 per annum
- Body Corporate Fees are approximately \$34 per week
- Estimated Rental Potential of \$680 - \$700 per week

Why do people love living in Coomera? A charming suburb in the Gold Coast, Queensland that offers a delightful mix of urban comforts and natural beauty. It's home to the bustling Westfield Coomera shopping centre, diverse restaurants, and cosy cafes. Nature lovers can explore Coomera Waters and Coomera Regional Park, while thrill-seekers enjoy nearby theme parks like Dreamworld and Movie World. With its blend of amenities and attractions, Coomera has something for everyone to love. For all of your home loan needs, please contact our friendly broker, Conrad Palmer on 0410 296 050. Important: Whilst every care is taken in the preparation of the information contained in this marketing, Ray White will not be held liable for the errors in typing or information. All information is considered correct at the time of printing.