

20 Pioneer Parade, Banora Point, NSW 2486

House For Sale

Thursday, 13 June 2024



20 Pioneer Parade, Banora Point, NSW 2486

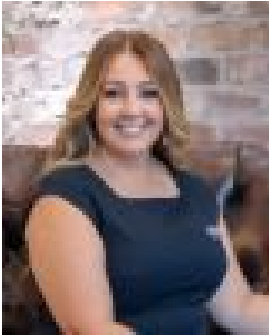
Bedrooms: 3

Bathrooms: 2

Parkings: 3

Area: 740 m2

Type: House



Kylie Lowry
0755898688

Expressions of Interest

OPEN FOR INSPECTION THURSDAY 20 JUNE FROM 4:00 - 4:30PM OPEN FOR INSPECTION SATURDAY 22 JUNE FROM 10:00 - 10:30AM Welcome to this charming original brick family home, nestled in the heart of beautiful Banora Point. This home exudes charm and character, with its original brick facade and welcoming atmosphere. Boasting timeless appeal, this property is the perfect canvas brimming with endless potential that caters not only to families but also savvy investors. Tucked away in a family-friendly neighborhood, this property provides the perfect foundation for crafting cherished memories or maximizing investment returns. Situated on a generous level 740m² block, the flat yard is a true highlight, offering a beautiful space for children to play or for hosting outdoor gatherings. There is also plenty of room to accommodate a large swimming pool (STCA) or any outdoor improvements (STCA) you may wish to add. The central location ensures you're never far from the essentials, making day-to-day living a breeze. This residence features the potential for additional income or dual living with the self-contained dwelling (STCA).

KEY FEATURES: 3 Bedrooms + Study Generous sized kitchen 2 Bathrooms Multiple Living Areas Desirable flat yard on 740m² block Solar Panels Ducted Air conditioning Double Glazed Windows Tandem Lock Up Garage with internal access. Enclosed rear patio, has been converted to extra living space.

WHERE TO FROM HERE:- 8 minute drive to the Gold Coast International and Domestic Airport - 6 minute drive to Tweed city - 9 minute drive to the new Tweed Valley Hospital - 15 minute drive to world class beaches in Coolangatta - 10 minute drive to Kingscliff - 45 minute drive to Surfers Paradise - 40 minute drive to Byron Bay - 1 hour & 20 minute drive to Brisbane CBD

THE FINER DETAILS: Land Size: 740m² Rental Appraisal: \$750-\$850 Per Week Council Rates: \$2,835.00 per annum (approx)

DISCLAIMER The information relating to this property has been obtained by a third-party source, which is believed to be accurate and reliable. RBR Property Consultants has taken every care to ensure this information is as reliable and accurate as possible but may be subject to errors and omissions. RBR gives no guarantee that this information is 100% correct and it is recommended that you consult an advisor to verify any information for any properties.