

20 Timber Ridge, Port Macquarie, NSW 2444

House For Sale

Wednesday, 13 December 2023



20 Timber Ridge, Port Macquarie, NSW 2444

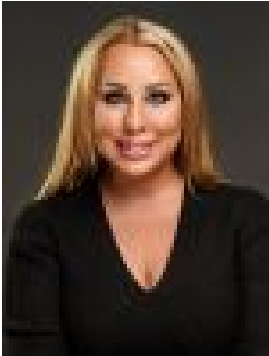
Bedrooms: 6

Bathrooms: 4

Parkings: 2

Area: 1147 m2

Type: House



Corrine Cunningham
0265838606



Tyson Cunningham
0481123047

Offers Invited

Inspections during Christmas & New Year Holidays Invited 'By Appointment' & Saturdays As Advertised Nestled on a generous block of approximately 1147sqm, in a quiet leafy cul de sac within an exclusive estate, discover a magnificent manor, a home of distinction that cleverly combines architectural features with modern updates. Enjoy the best of coastal living, a peaceful and private sanctuary positioned directly opposite rainforest bushland, just minutes from Lighthouse Beach and Shelly Beach. It's hard to believe this quiet community oriented neighbourhood is only a short drive into the vibrant Town Centre of Port Macquarie with an array of shops, waterfront restaurants and much more. Living here you get to enjoy amazing wildlife at the doorstep, such as koalas and spectacular birdlife. A majestic tree, accompanied by a swing and a charming porch welcomes you into a sprawling dual level home. One wing reveals a large country-style kitchen, fit for a chef with two Bosch ovens, gas cooking, an abundance of detailed cabinetry, double farmhouse sinks, and a large timber-top island. This domain also includes a spacious living room with a wood fire opening onto outdoors. An expanse of feature windows, rich timbers, a gabled roof, and ornate cornicing instantly evokes a sense of nostalgia, reminiscent of a classical era. On the opposite side is a dedicated office and a private two-bedroom wing, complete with a second kitchen and bathroom. Both wings provide their own access onto a full length outdoor entertaining area. Natural light fills every room and a coastal breeze flows throughout the entire home. A grand staircase leads to four generous bedrooms, including a master suite boasting its own ensuite bathroom and walk in robe. The striking main bathroom is a highlight, featuring a modern shower and luxurious freestanding bathtub. In addition to the main house is a fully self-contained one-bedroom granny flat, with reverse cycle air conditioning and ceiling fans for modern comforts; perfect for accommodating guests, potential Airbnb, rental income, or separate living quarters for family members. An additional outdoor entertaining area serves as the ideal retreat for teens or a multi-purpose space for all weather occasions. An exciting opportunity awaits to elevate this property's architectural innovation to new heights. Redesigned to accommodate an extended family, this property presents limitless potential, a blank canvas for endless possibilities.