

20 Waterloo Plains Cres, Winchelsea, Vic 3241

House For Sale



Wednesday, 20 September 2023

20 Waterloo Plains Cres, Winchelsea, Vic 3241

Bedrooms: 3

Bathrooms: 2

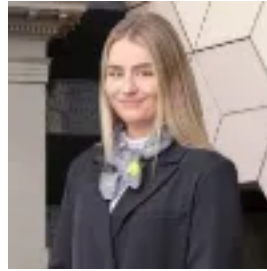
Parkings: 7

Area: 1085 m2

Type: House



George Politis
0352411331



Mollie Chandler
0475843029

\$1,000,000 to \$1,100,000

Presenting 20 Waterloo Plains, Winchelsea - a distinguished property offering a blend of modern elegance, functional design, and convenience. This thoughtfully designed residence encompasses: **Property Details:** 3 bedrooms, including a master bedroom with a walk-in robe and ensuite for added luxury. The main bathroom caters to the remaining 2 bedrooms, ensuring comfort and accessibility. A 3-car garage seamlessly attached to the house for secure parking and convenience. The kitchen, a culinary haven, boasts stone benchtops, a butler's pantry, and ample storage, combining style with practicality. Two distinct living zones provide versatile spaces for relaxation and entertainment. Set on a spacious 1085m² allotment, the property features an established garden, creating a picturesque backdrop. An additional large 4-car shed adds versatility to the property, offering ample storage or workspace. **Location:** Conveniently within walking distance to the award-winning Golf Course, local shops, and schools. An easy drive to Geelong, Colac, and the renowned Great Ocean Road, providing accessibility to diverse amenities and attractions. **Notable Features:** Ducted heating ensures year-round comfort, creating a cozy atmosphere. Double glazed windows contribute to energy efficiency and sound insulation. The property is strategically oriented to the north, maximizing natural light and warmth. A substantial 22,000-liter tank is dedicated to the garden, promoting sustainable water use and lush landscaping. This meticulously maintained property offers a harmonious combination of contemporary living and practical amenities. With its strategic location, versatile features, and attention to detail, 20 Waterloo Plains stands as a testament to refined living in the heart of Winchelsea.