

**201/20 Lomandra Drive, Clayton South, Vic 3169**



**Apartment For Rent**

Monday, 27 May 2024

201/20 Lomandra Drive, Clayton South, Vic 3169

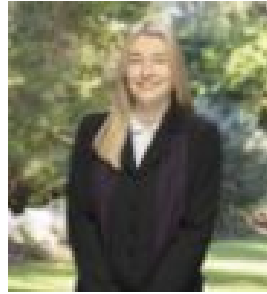
**Bedrooms: 2**

**Bathrooms: 1**

**Type: Apartment**



Elise Whitmore  
0398096388



Kiara Heales  
0398096388

**\$560 pw**

Beautifully appointed and extremely secure, this stunning designed apartment offers a highly sought-after, low-maintenance lifestyle in an incredibly convenient setting. The open-plan living/dining area merges with a contemporary kitchen featuring high quality appliances, extending further to a private entertaining terrace with great views. Featuring 2 robed bedrooms, stunning bathroom, split system heating/AC, double glazed windows, video intercom for added convenience and security and exclusive resident facilities including communal gym, landscaped courtyard with seating, rooftop terrace with built-in BBQ facility, bicycle parking spaces and communal outdoor dining area. With an elite level prime position, walking distance to Clayton shops and train station, bus stop, Monash Medical Centre, cafes and close to Monash University, Keeley Park, Namatjira Park, Westall Secondary College, St Peter's School, Meade Reserve, Clayton South Primary, multiple bus routes and the Monash Freeway. Inspection is a must!