

201/25 Honeysuckle Drive, Newcastle, NSW 2300



Apartment For Sale

Wednesday, 13 December 2023

201/25 Honeysuckle Drive, Newcastle, NSW 2300

Bedrooms: 1

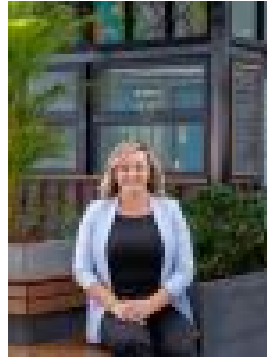
Bathrooms: 1

Parkings: 1

Type: Apartment



Peter Shiels
0422479552



Natalie Francis
0423606510

Contact Agent

Situated in the sought-after Lume development this spacious one-bedroom apartment is right in the heart of Newcastle's Honeysuckle foreshore precinct. Complimented by the highest quality features including integrated Miele appliances, stone bench tops, timber floors and wool carpets, this light filled apartment offers a combination of comfort and convenience enhanced by dazzling harbour views. Boasting an oversize master bedroom with a built-in robe, European laundry, loads of storage, stunning kitchen, spacious lounge and dining opening onto wrap-around balcony where you can enjoy uninterrupted views of the harbour and Newcastle Marina. Security entry, single space and storage space complete the package. Socialise with your new neighbours on the rooftop BBQ terrace where you can also take in the spectacular harbour and Nobbys views, or for some leisure time hit the complex lap pool, gym or sauna. Residents will also enjoy the convenience of the nearby cafes, world-class restaurants and hotels, boutique shops, extensive public spaces and the spectacular marina and yacht club. Newcastle's transport hub is only a short walk away. The waterfront promenade on which this striking building sits provides the opportunity to walk, run, ride or skate all the way to Newcastle's historic breakwall guarded by Nobbys Lighthouse. Property Highlights: - Stunning kitchen with induction cooking and integrated Miele appliances including fridge and dishwasher- Timber flooring- One oversized bedroom with large built-in robe- Stylish main bathroom- Wrap around entertaining terrace with stunning water views- Ducted reverse cycle air conditioning with zone control- Single car space, storage cage and security access - Internal laundry with washer and dryer- Onsite facilities include rooftop terraces complete with BBQ, swimming pool, sauna and gym- Located on the doorstep of the Honeysuckle precinct offering access to the harbour, cafes, bars, restaurants, light rail, Newcastle University Innovation hub and the CBD