

# 201/32 Ebsworth Street, Zetland, NSW 2017

## Apartment For Sale

Sunday, 26 May 2024

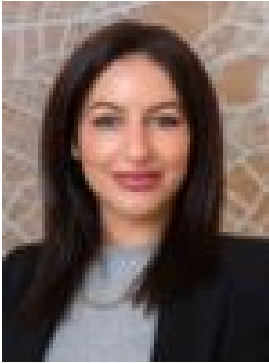
201/32 Ebsworth Street, Zetland, NSW 2017

**Bedrooms: 1**

**Bathrooms: 1**

**Area: 60 m2**

**Type: Apartment**



Emma Symonds

## Contact Agent

Step into the epitome of modern living within Green Square's prestigious Mirvac's Portman Collection. This exquisite one-bedroom apartment is part of Australia's first residential building pursuing WELL Certification under WELL v2. Designed to enhance your well-being and comfort, this residence sets a new standard in luxury urban living through the collaboration of Mirvac, Landcom, and CO-AP Architects.- One-bedroom luxury with a contemporary, wellness-focused design.- Elegant bathroom with sophisticated fixtures and full-height tiling.- Gourmet kitchen featuring Miele appliances and stone benchtops.- Spacious interiors enhanced by generous ceiling heights and natural light.- Advanced climate control with zoned air conditioning.- Acoustically designed for a peaceful living environment.- Exclusive access to well-equipped gym and business centre.- 300 meters to Green Square Station, 4.8 km to Sydney Airport.This property has a current leasing opinion of \$850 p/wLive a life of unparalleled luxury and holistic well-being. Designed not just for living but for thriving, this home is a testament to the synergy of innovative architectural design and visionary urban planning. Embrace the luxury of high-specification interiors, contributing to a living space where every detail is designed for comfort. Experience the future of urban living today in Green Square.