

# 2013/41 Austin Street, Newstead, Qld 4006

HAMISH BOWMAN PROPERTIES

## Townhouse For Sale

Thursday, 11 April 2024

2013/41 Austin Street, Newstead, Qld 4006

Bedrooms: 5

Bathrooms: 4

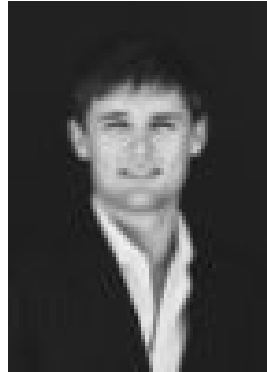
Parkings: 4

Area: 595 m2

Type: Townhouse



Hamish Bowman



Joel Imeson  
0455918437

## FOR SALE

A New York-inspired residence surpassing the loftiest of expectations. Few would be aware this bespoke inner-city property exists, yet it is comparable to only the most impressive of Brisbane residential offerings. Deserving of grand rhetoric however when that colourful prose is stripped back, at the core of it all is a statement home unlike anything else in Australia. Designed by the internationally renowned architecture practice, Bureau Proberts, who worked in collaboration with their clients seeking a liveable, fun, and completely unique luxurious home for themselves and their children. The remarkable outcome is an inner-city lock-up-and-leave residence within easy walking distance of everything desired and offering access to abundant onsite wellness facilities. A warm glow of the formal dining room's feature pendant light hints at the sheer magic of what lies behind a professionally landscaped front terrace. It is the only sign of life from street level, and reveals little of the magnitude of the gallery-like spaces forming the foundation of this tri-level home. The intimacy of the terrace and a welcoming living area dissipates along the length of a hallway leading to a colossal sunken lounge, living, kitchen and poolside entertaining space. This is strategically framed by a swimming pool on one end and a voluminous open-air void at the other to deliver the ideal trilogy of landscape, sunlight and outlook. All five bedrooms are accessible via the dedicated lift or staircase, leading to a private children's wing with a separate rumpus, as well as the main retreat with a large walk-in wardrobe, oversized sculptural bath and study. The finer details yield some of the greatest impact such as the soundproof curtain sealing off the children's area, laundry chute, professional art gallery lighting system, rooftop solar farm, and smart home technology. Commissioning awarded artist Jason Fitzgerald to deliver a magnificent three-piece artwork within the central void shines a light on the individuality of this residence. As does the inclusion of 55sqm of wine storage, three secure basement parking spaces, a 4.5-metre high secure garage for car/boat/bike/surfboard storage, ancillary secure storage, and a designated motorcycle space. Unrestricted access applies to all recreational facilities within the Newstead Series community. Multidisciplinary landscape design collective LatStudios drew on Brisbane's 'backyard' vernacular in creating a gated green