

**202/14 Burroway Road, Wentworth Point, NSW  
2127**

**Raine&Horne**

**Apartment For Sale**

Friday, 3 May 2024

202/14 Burroway Road, Wentworth Point, NSW 2127

**Bedrooms: 2**

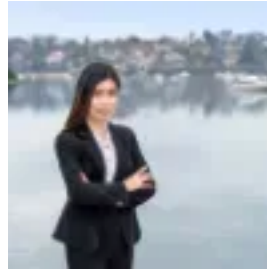
**Bathrooms: 2**

**Parkings: 1**

**Type: Apartment**



Kalaney Che  
0422273658



Angell Yang  
0434259336

## Just Listed! Contact Agent

This exceptional building has been developed by the award-winning developer, Billbergia. Explore a vibrant community where every luxury and necessity awaits just beyond your doorstep. Venture downstairs to discover Marina Square's upscale lifestyle offerings, including myriad of dining and Café tucked away in laneways, and essential everyday shopping options. With Marina Square shopping centre right at their doorstep, residents enjoy unparalleled convenience and access to a plethora of amenities. Features:- Spacious open-plan living and dining area seamlessly extends to a balcony with a north-facing aspect, allowing for ample natural light and a delightful indoor-outdoor flow- Versatile winter garden with bi-fold retractable double-glazed door ensuring tranquillity throughout the space - Timber floor throughout - Modern gourmet kitchen with glass splash back, LED light, gas cooktop, stainless steel appliances, completed with an elegant kitchen island- Split system air-conditioning in both living room and bedroom.- Both bedrooms complete with built-in wardrobes, with the master bedroom featuring an ensuite - Master room includes a convenient study nook, providing a dedicated space for work or study within the comfort of your own bedroom.- Bathrooms tiled to ceiling and separated frameless shower screens - Internal laundry with washer/dryer combo and ample storage space.- Secure building with intercom system and lift access.- One allocated underground parking space and storage cage.- The building close proximity to local schools, including Wentworth Point Public School just 100 meters away and the brand-new high school at Wentworth Point- Free community shuttle bus stop, the footbridge leading to Rhodes train station, and Sydney Olympic Park Wharf, accessibility is effortless.- Living area of 82 sqm, with a total area on title of 98 sqm.Don't wait to call our friendly team now for more information.(Disclaimer: All information contained herein is gathered from sources we believe to be reliable; we cannot guarantee accuracy. Any interested parties should rely on their own enquiries.)