

**202/2 Goatcher Vista, Shenton Park, WA 6008**

*MOUVE*

**Apartment For Sale**

Saturday, 20 April 2024

202/2 Goatcher Vista, Shenton Park, WA 6008

**Bedrooms: 1**

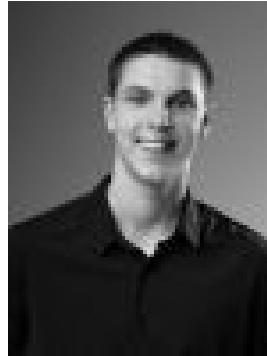
**Bathrooms: 1**

**Parkings: 1**

**Type: Apartment**



Sarah Beale  
0407939931



Luke Morgan  
0424048727

**From \$565,000**

Nestled in the heart of Montario Quarter Village, Shenton Park, Victoria House offers a refined approach to apartment living. Designed by MJA Architects and developed by the Hesperia Group, this site offers the perfect balance of a Heritage listed façade and contemporary lifestyle, including retail, commercial and hospitality options. With exquisite modern, architectural finishes and state of the art amenities, this luxury 1 bedroom abode offers the highest detailing and is the ultimate residence for you. Apartment includes:- Timber floors throughout kitchen & living area- Wool carpet in bedroom- Bosch Appliances- Integrated Fisher & Paykel fridge/freezer- Dishwasher- Plenty of storage space. Amenity includes:- Office/boardroom- Wine room, extending onto entertaining area and outdoor bbq area- Workshop- Community gardens- Dog wash station. Do not miss this rare opportunity to secure your piece of history.