

202/26 Parkside Crescent, Campbelltown, NSW

STONE

2560

Sold Unit

Wednesday, 20 September 2023

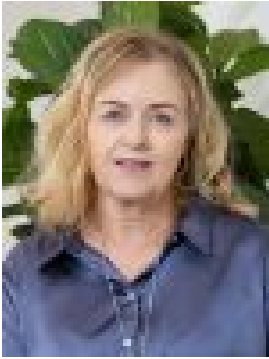
202/26 Parkside Crescent, Campbelltown, NSW 2560

Bedrooms: 3

Bathrooms: 2

Parkings: 2

Type: Unit



Michelle Balabka
0419473253



Sarah Hales
0401403588

\$758,000

A rare opportunity awaits with this beautiful 3 bedroom single level apartment, in arguably the most sort after positioning in Park Central. When it comes to lifestyle you will find this apartment has it all within a 1km radius including both the private and public hospitals, Macarthur Square restaurant and entertainment precincts, the railway station and more! > Highly desirable, city chic, north facing and located directly opposite Marsden Park.> Brand new carpets throughout the living area and bedrooms, floor to ceiling sheer curtaining add a touch of luxury and privacy> Loads of natural light streams through the floor to large, glassed doors and windows in the combined lounge and dining area.> The generous sized external balcony extends the living space and is the perfect space for entertaining with friends and family.> Galley style kitchen comes complete with polyurethane cupboards, stone bench tops, glass splash back, ample storage, island breakfast bar and new tiled floor.> Located in the boutique 'Pinnacle Apartments' building this apartment would be perfect for empty nesters, downsizers or any professional.Extra Inclusions:> Ducted air conditioning> Security building with video intercom> Electric privacy shutters> Tandem secure lock up parkingNOTE: In preparing this, we have used reasonable endeavours to provide information that is true, however it is provided on the basis that readers will be responsible for making their own assessment of the information and are advised to verify all relevant representations, statements and information. All photographs and images are representative only, for marketing purposes.