

**202/8 Exploration Lane, Melbourne, Vic 3000**



**Apartment For Rent**

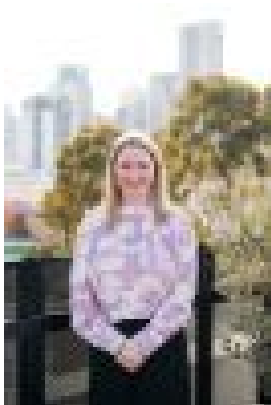
Monday, 13 May 2024

202/8 Exploration Lane, Melbourne, Vic 3000

**Bedrooms: 1**

**Bathrooms: 1**

**Type: Apartment**



Jessica Lander  
0475345664

**\$520 per week**

"EastEnd Apartments". Light-filled, north-facing, and situated in the heart of the CBD. Fully furnished Timber floors throughout Air-conditioned open plan living and dining domain Contemporary kitchen equipped with stainless steel appliances and stone benchtops Stepping out to a large north-facing balcony Stunning CBD vistas courtesy of full-length windows Luxuriously appointed bedroom with walk-in robe Sleek ensuite bathroom, convenient European laundry, split system air conditioning High security video intercom access and onsite building manager Communal amenities including onsite pool, spa, sauna, and gym Perfectly positioned on the edge of the city, just off Little Lonsdale Street, you'll find the City Circle tram, Parliament station, Carlton Gardens, RMIT University, St Vincent's Hospital, the Princess Theatre, Melbourne Central, QV and all other specialty retail shops and restaurants right at your doorstep! \*\* Please register for inspection. Only registered renter's will be notified of changes and open for inspections