

**203/165 Middleborough Road, Box Hill South, Vic
3128**



Townhouse For Sale

Tuesday, 21 May 2024

203/165 Middleborough Road, Box Hill South, Vic 3128

Bedrooms: 2

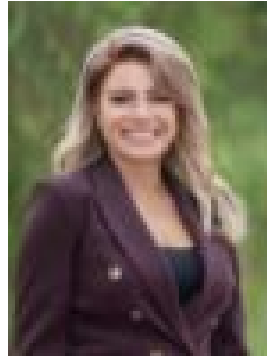
Bathrooms: 1

Parkings: 1

Type: Townhouse



Charles Shi
0423633253



Christine Bafas
0427835610

\$550,000 - \$600,000

Elevated within an inviting boutique development, filled with natural light and overlooking a tranquil communal garden with an expansive lawn, this two storey residence offers an enviably low maintenance lifestyle in a superbly central location. With local Middleborough Road village shopping and cafés mere metres away, the apartment is just a short stroll from Orchard Grove Reserve walking trails, Indra Playground, lush Wurundjeri Wetlands and buses. Gardiners Creek Trail and Burwood Brickworks are within walking distance, while both Laburnum Station and trams to Deakin University and Burwood One shopping are moments away. Set within the sought-after Box Hill High School zone, the location is also near Roberts McCubbin Primary School and Kingswood College. On the main floor, a large open plan living and dining area features elegant wide engineered oak flooring, and flows out to a spacious treetop balcony ideal for relaxed outdoor dining. The sleek modern kitchen includes stone benchtops, a breakfast bar, a substantial corner pantry, and quality stainless steel Blanco appliances with a dishwasher, electric oven and gas cooktop. Elevated on the carpeted upper level, two light-filled bedrooms each offer panel heading and generous built-in wardrobes, with the master boasting enchanting leafy views across the peaceful communal garden. A spacious central bathroom includes a semi-frameless glass shower and a heated towel rail, and is complemented by a Euro laundry and an additional guest powder room. Featuring split system air conditioning, roller blinds, remote video intercom entry, and CCTV cameras within the building, the apartment also includes a secure carspace and storage cage next to the internal lift.