

**204/121 Power street, Hawthorn, Vic 3122**



**Apartment For Rent**

Thursday, 13 June 2024

204/121 Power street, Hawthorn, Vic 3122

**Bedrooms: 2**

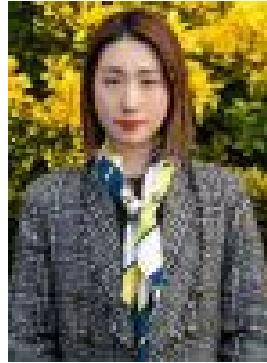
**Bathrooms: 1**

**Parkings: 1**

**Type: Apartment**



Tully Keung  
0433861886



Vivian Cheng  
0423314388

**\$600 per week**

Maple Hawthorn complex, located in the bustling Burwood Road shopping precinct, with some of the best local amenities at your doorstep, with added convenience of trams and Hawthorn train station a few steps away. Close proximity to local parklands, new and established cafes, shopping and recreational facilities that Hawthorn has to offer. This beautiful apartment comes with a generous and open space including • Open plan living kitchen dining • 1 bedroom • 1 multi-purpose room - flexible enough to cater as dedicated dining, study, storage or an extra bedroom. • 1 bathroom • 1 car park. Envious living right in the heart of Hawthorn at the corner of Power Street and Burwood Road. Maple is architecturally designed and crafted residences. Some of the features of this amazing apartment is • Tranquil colour scheme including timber floorboards • Modern SMEG appliances • Stone benchtop and island bench • Industrial look ceilings • Good sized modern bathroom with laundry facilities • Split system A/c in living room • Generous balcony overlooking surrounding views. Building is fully secured with security entrance and basement car parking. Living here you will enjoy unprecedented convenience and connectivity to everything that truly matters including • Hawthorn train station - 300 metres • Café in the building • Trams at your doorstep • Restaurants, Retail and leisure within minutes • Top schools within walking distance