

204/2-4 Aberdour Avenue, Rouse Hill, NSW 2155

MANOR

Sold Unit

Wednesday, 6 September 2023

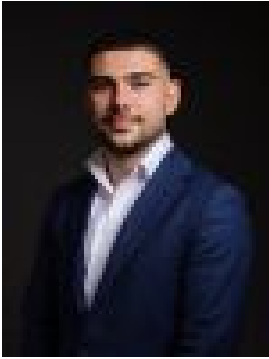
204/2-4 Aberdour Avenue, Rouse Hill, NSW 2155

Bedrooms: 2

Bathrooms: 2

Parkings: 2

Type: Unit



Michael Karanicolas
0296395833



Jay Bacani
0296395833

\$585,000

If you are looking for a modern, sun-drenched apartment, in an enviable location close to all life's amenities, then look no further! This spacious and open plan apartment offers a seamless flow between indoor and outdoor living areas as well as two generous sized bedrooms of accommodation. Positioned in a convenient location within walking distance to Rouse Hill Village Centre, quality local schools, family-friendly parks, City buses and a short drive to Rouse Hill Town Centre, Metro Station and easy access to main arterial roads. Additional features include: * Sun-drenched living area * Separate dining area off the kitchen * Centrally located galley style kitchen equipped with island benchtop with breakfast bar, gas cooktop, rangehood, built-in oven, dishwasher and ample storage * Two spacious bedrooms with built-in robes to both and ensuite to the master * Large family bathroom with bath/shower * Internal laundry * Two undercover balcony entertaining areas - one off the living and one off the dining * Split system air-conditioning * Double car space * Childcare centre, doctors and coffee shop underneath for your convenience * Large, paved courtyard ideal for family gatherings

Location Approximates: * Northwest Health Medical Centre directly below * Coffee Shop directly below * Young Academics Early Learning Centre directly below * 50m to Rouse Hill Village Shops * 290m to Connie Lowe Reserve * 300m to Rouse Hill Takeaway Dining Precinct * 420m to Rouse Hill Public School * 750m to The Mean Fiddler * 950m to Rouse Hill Home Hub * 1.3km to Rouse Hill Town Centre * 1.5km to Rouse Hill Metro Station * 1.2km to Rouse Hill Anglican College * 1.6km to Rouse Hill Regional Park * 2.7km to Rouse Hill High School