

204 The Esplanade, Sylvania, NSW 2224



Sold House

Friday, 10 November 2023

204 The Esplanade, Sylvania, NSW 2224

Bedrooms: 4

Bathrooms: 3

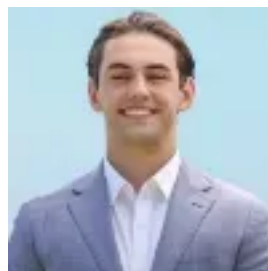
Parkings: 2

Area: 556 m2

Type: House



Adam Crawley
0295449595



Declan Fallah
0295449595

\$1,735,000

Situated on the high side of a serene, tree-lined street, this property is an excellent family home ready for immediate occupancy to suit all. Separate entertaining/gaming areas and the potential for self-contained living downstairs allows for the possibility for multi-generational families to live comfortably. The residence is light and airy and enjoys a leafy outlook of the surrounding areas. Along with architecturally designed improvements encompassing the latest design features, the residence keeps some of its original character. Enjoy the brand new designer kitchen with integrated appliances as well as new finishes, fixtures and lighting throughout the residence. Just moments to Kareela Golf Course, public transport and shopping centres. - Large family home with multiple living opportunities- Double garage with workbench space and internal access.- Downstairs has a large bedroom, bathroom, gaming area, wet bar and laundry - Upstairs large open-plan living and dining areas connect to balcony areas.- Generously sized bedrooms, all with built-in-robos. Main bedroom with ensuite-Brand-new kitchen with generous bench tops and storage areas along with new integrated appliances.-Main bathroom with separate bath and shower-Established gardens and flat backyard space-Smart security system with back to base alarm-Moments to Kareela Golf Course, public transport and shopping centres.Council - \$490.00 PQWater - \$158.45 PQ + usageWhen looking at properties it's important to have confidence in how much you can borrow. As Ray White are partnered with Loan Market they can make this simple and easy for you. Should you wish to know your borrowing powers simply go to www.loanmarket.com.au/brokers/jason-wylie now and our Loan Market broker will be in touch.