

205 Lee and Clark Road, Kemp's Creek, NSW 2178



House For Sale

Wednesday, 12 June 2024

205 Lee and Clark Road, Kemp's Creek, NSW 2178

Bedrooms: 3

Bathrooms: 2

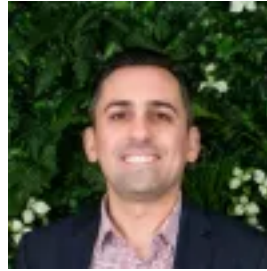
Parkings: 4

Area: 6 m2

Type: House



Zeth Grant
0296452400



Zoran Cvetkovski
0296452400

Contact Agent

John B Grant Real Estate, Chester Hill, is proud to offer 205 Lee & Clark Road, Kemps Creek to the marketplace. What a great opportunity to land bank with this investment property situated within the Aerotropolis Land Use Plan, in the heart of the South West growth area. This prime piece of real estate is potentially earmarked for future residential subdivisions, making it an excellent choice for investors looking to capitalize on future development prospects.

Property Highlights:

- **Land Size:** 2.74 hectares / 6.77 acres / 27,410 sqm (approx.)
- **Frontage:** 75.87 meters (approx.)
- **Depth:** 240.32 meters (approx.)

Home Features:

- **Bedrooms:** 4 spacious bedrooms with polished timber floors throughout
- **Living Space:** Open-plan living and dining room that opens to the kitchen
- **Bathroom:** Full bathroom with a separate toilet
- **Garage:** Double lock-up garage with internal access and laundry
- **Additional Structure:** Large work shed for versatile use

Investment Potential:

- **This property is not just a home but a future investment gem.** Located in the fast-developing South West growth area, it is perfectly positioned to benefit from the upcoming infrastructure and development projects within the Aerotropolis Land Use Plan.

Location:

- **Proximity to Aerotropolis Core:** Prime location within the designated Aerotropolis Land Use Plan
- **Growth Area:** Situated in the heart of the South West growth area, offering immense potential for future development
- **Seize this unique opportunity to invest in a property with significant future potential.** Whether you are looking to land bank or develop, this property offers endless possibilities.

Don't miss out on this rare chance to secure a prime investment property in one of the most promising areas of Kemps Creek. Act now and be a part of the future growth and development!

Zoned RU4 Primary Production Small lots
Council Rates 988.00 per quarter approximately
Sydney Water \$260.61 per quarter approximately
Call today for a private inspection.