

208/15 Forest Grove, Epping, NSW 2121

STONE

Unit For Sale

Tuesday, 28 November 2023

208/15 Forest Grove, Epping, NSW 2121

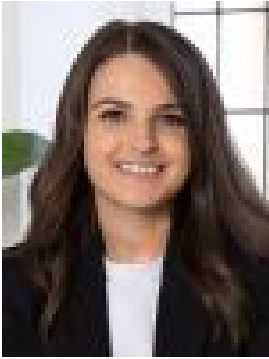
Bedrooms: 2

Bathrooms: 2

Parkings: 1

Area: 109 m2

Type: Unit



Chloe Mawass
0431983240



Jessica Zhou
0412733135

Auction Guide \$700,000 - \$750,000

Situated in one of the area's best locations within the esteemed Tilia development, this luxe two-bedroom apartment delivers an elite lifestyle opportunity, with sundrenched interiors fusing warmth and stylish design and a fluid contemporary layout extending to a spacious balcony. Positioned on the second floor overlooking Forest Park, it's a haven of lock-and-leave ease, a walk to the Metro station, buses, and shops.- Gorgeous, inviting engineered timber flooring and roller blinds throughout- Open plan, bright and airy living/dining zones with sliding doors to balcony- Sleek kitchen with gas stove, all-Miele appliances, semi-integrated dishwasher- Two sizeable bedrooms, both with built-in robes, one with luxurious ensuite - Great natural airflow, corner balcony overlooking Forest Park, sliding privacy screen, gas point for BBQ- Single car space, storage cage, euro-style laundry, ducted a/c, video intercom- Zoned for Epping Public, Cheltenham Girls, Epping Boys and Carlingford High- Approx. 550m to Epping Metro and buses via shortcut and 800m to supermarket
Water rates - \$173.29 per quarter
Council rates - \$316 per quarter
Strata rates - \$1,065.60 per quarter