

208 Springfield Road, Blackburn, Vic 3130



Sold House

Wednesday, 13 September 2023

208 Springfield Road, Blackburn, Vic 3130

Bedrooms: 3

Bathrooms: 1

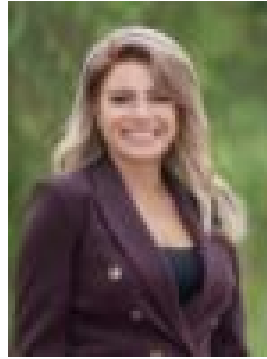
Parkings: 4

Area: 696 m2

Type: House



Charles Shi
0423633253



Christine Bafas
0427835610

\$1,181,000

This impressive property boasts a winning combination of ample land size and a prime location. Nestled on a generous 696sqm approx. block, this well-maintained home is set to captivate families, investors, and developers alike. The potential to transform the site into luxurious new homes or modern townhouses (subject to council approval) is simply irresistible. Step inside and be greeted by a comfortable and inviting atmosphere. The spacious living and dining areas set the stage for countless cherished family moments. A cozy family room provides the perfect space to unwind and relax. The tidy kitchen, complete with abundant storage, a gas cooktop, and dishwasher, inspires culinary creativity. This residence boasts three bright bedrooms, ensuring ample room for a growing family. For those with professional commitments, a home office is a welcome addition. Serviced by a central bathroom and powder room, convenience and functionality are at the heart of this home. Extra features, such as reverse cycle split systems, a carport for additional parking, and a double garage, further enhance this property's appeal. Situated in a truly exceptional location, this home is just a leisurely walk from The Peddler Cafe and bus services with rail links. It is surrounded by esteemed educational facilities, including St Philips and Whitehorse Primary Schools, as well as Blackburn High School. The recently completed North Blackburn Shopping Centre caters to your retail needs, while local parks provide green spaces and tranquillity. The nearby Blackburn Lake Sanctuary beckons with its picnic facilities, walking trails, and playground. Commuting to the city or exploring the wider area is made effortless with Blackburn Station Village and the Eastern Freeway/Eastlink within close proximity.