

21/15 Gertrude Street, Wollie Creek, NSW 2205



Apartment For Sale

Tuesday, 6 February 2024

21/15 Gertrude Street, Wollie Creek, NSW 2205

Bedrooms: 2

Bathrooms: 1

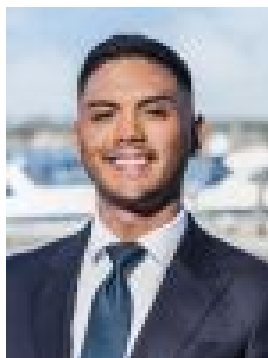
Parkings: 1

Area: 112 m2

Type: Apartment



Trent Tarbey
0295293633



Josh Vela
0295293633

\$800,000

Residing on the top floor of a contemporary boutique complex, this stylish apartment gazes out to the river while the city glitters on the horizon. Delivering ultimate convenience, it's within footsteps of Cahill Park, Wolli Creek Station and village shops.- Light filled open interiors reveal soft tones, timber floors- Living/dining zone flows to glorious north facing balcony- Sleek stone kitchen boasts timber island and gas cooking- Main bedroom has wardrobe, second includes private balcony- Bathroom has oversized rain shower, soothing colour palette- Ducted air conditioning, European laundry, intercom entry- Shared rooftop terrace showcases modern barbecue facilities- Secure car space and storage cage, convenient lift access- Moments from airport, highway, golf club, beautiful beaches- Strata levies \$2,014 pq; Water rates \$688 pa