

21/3 Eden Avenue, Coolangatta, Qld 4225

Coastal

**Sold Apartment**

Thursday, 14 September 2023

21/3 Eden Avenue, Coolangatta, Qld 4225

**Bedrooms: 3**

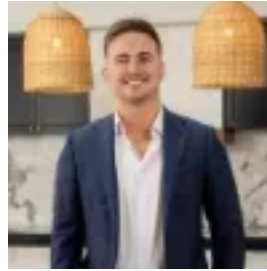
**Bathrooms: 2**

**Parkings: 1**

**Type: Apartment**



Ed Cherry  
0755266999



Lochie Torpy  
0755266999

**\$2,150,000**

Basking in panoramic coastal views that stretch across the endless Pacific Ocean and north to the Surfers Paradise skyline, this apartment represents an enticing opportunity. Perched on the 8th level of the highly sought-after "Carool Apartments", it's a rare half-floor configuration which promises space and style. Boasting three generously sized bedrooms, each enjoys ocean vistas, with the master suite complemented with a walk-in robe, ensuite and private balcony. A main bathroom with separate toilet caters to the remaining bedrooms, each with built-in robes. Occupying an 154m<sup>2</sup> floorplan, the apartment also features a modern kitchen, where sleek stainless-steel benches unite with crisp white cabinetry and the warmth of timber batten finishes. Quick and easy meals are best enjoyed on the handy breakfast bar, or take advantage of the adjoining dining area which connects with a spacious living room. Here, soak in the stunning coastal landscape while you relax or step out onto the balcony, where you can watch waves breaking or whales migrating. Cradled between Greenmount Beach to the north and Duranbah to the South, Rainbow Bay is renowned as a relaxed coastal haven with a sheltered shoreline. It's also the gateway to world-famous surf breaks, with Snapper Rocks and the Superbank beckoning mere minutes away. Once you've worked up an appetite, enjoy being within walking distance of popular cafes and restaurants both here and in neighbouring Coolangatta. Travel is easy too, with Gold Coast Domestic and International Airport just 4km away. Whether it's a savvy investment or low-maintenance lifestyle you seek, now is the chance to seize the beachside dream - arrange an inspection today.

Property Specifications:

- Rare, half-floor 3 bedroom unit with panoramic coastal views
- 8th level of the highly-sought-after "Carool Apartments"
- Exceptional location, stroll to beaches, surf breaks, parks, cafes and restaurants
- Modern kitchen with ample storage
- Spacious living and dining flows onto a wraparound balcony
- Master bedroom with walk-in robe, ensuite and private balcony
- Two additional bedrooms with built-in robes
- Main bathroom with separate toilet
- Generously-sized balcony enjoys city skyline and Pacific Ocean views
- Internal laundry plus ample storage throughout
- Secure underground parking for one car
- Heated swimming pool and fantastic onsite managers
- Meander along the Oceanway, connecting pristine southern Gold Coast beaches
- 300m to Rainbow Bay Beach and SLSC, Snapper Rocks and Apex Park
- 850m to Duranbah Beach and Ebenezer Park
- 2.5km to The Strand, Coolangatta and 4km from Gold Coast Airport

Disclaimer: All information contained herein is gathered from sources we believe to be reliable. However, we cannot guarantee its accuracy and interested persons should rely on their own enquiries.