

21 Amega Street, Mount Gravatt East, Qld 4122

House For Rent

Friday, 19 April 2024



21 Amega Street, Mount Gravatt East, Qld 4122

Bedrooms: 4

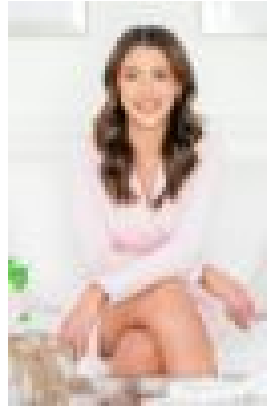
Bathrooms: 3

Parkings: 4

Type: House



Karen Herbert
0733473737



Madeline Walsh
0733473737

\$1,000 Mansfield SHS Catchment | Pool

Standing proudly on the primely positioned, elevated block, this sprawling abode offers comfort with everything at your fingertips. Boasting multiple living areas and showcasing expansive uninterrupted valley views your new home is the ideal space to enjoy tranquility or entertain family and friends. Features You Will Love: UPSTAIRS:- The inviting entrance ushers you through to the huge servers-style kitchen, boasting sleek ample cupboard space + dishwasher;- Kitchen features include breakfast bar + 5-burner gas cooking + double basin sinks- Sprawling open plan living and dining areas spill out effortlessly to the entertainer's deck with cascading views- The master bedroom is situated on the upper level with a walk in robe that leads to the ensuite, air-conditioning + ceiling fan. French doors provide private access to the rear deck- Boasting 2 large bedrooms complete with built in robes, air-conditioning + ceiling fans- Main bathroom with generous walk in shower, large vanity with storage + toilet- Study room fitted with built in shelving DOWNSTAIRS:- Bedroom 4 complete with built in storage and cool tile underfoot, enjoy the private access to the undercover alfresco area- Bathroom with shower, generous vanity + toilet- Downstairs features an oversized rumpus area with ceiling fans - perfect as a teenage retreat or media space- French doors allow you to seamlessly enter out onto the breezy entertaining area overlooking your tropical oasis- Sparkling in-ground pool beckons you to dive in, surrounded by tropical greenery ensuring your privacy- Sprawling undercover alfresco area to enjoy all year round + hanging love seat, looking out on the manicured grass area BUT WAIT, there's more. . . - Double remote control garage with internal access + extra room for storage- Fully fenced outdoor area- Multiple living opportunities- Ample storage space throughout- Polished timber flooring Location and Lifestyle:- Short drive to major shopping - Mt Gravatt Plaza and local shopping, restaurants and facilities- Make your way up and visit Mount Gravatt lookout- Easy access to major M1 freeway- 8 minutes to Griffith University Mt Gravatt Campus- Located within the Mansfield State High School and Mt Gravatt East State school catchments, with close proximity to Clairvaux MacKillop College- Water usage charges apply- Resident to pay for pool chemicals NOTE: Applications are unable to be processed until you or someone on your behalf has viewed the property. Please register to inspect.