

21 Binya Place, Ocean Shores, NSW 2483



Sold House

Friday, 19 January 2024

21 Binya Place, Ocean Shores, NSW 2483

Bedrooms: 3

Bathrooms: 2

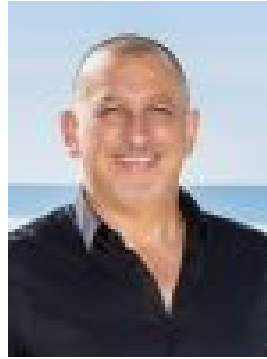
Parkings: 2

Area: 937 m2

Type: House



Tezu Harrison
0266391200



Nick Dunn
0266391200

Contact agent

Step into this beautiful light-filled 3-bedroom coastal home nestled amongst the treetops, take in sweeping ocean views and enjoy serene moments on the deck surrounded by lush rainforest. This northeast-facing property with expansive windows, high raked ceilings and lime-washed floors, is abundant with sunlight all year round. Relish idyllic summer evenings on the verandah, surrounded by nature and wake up to the sunrise and kookaburras' calls from the master bedroom's balcony. With low-maintenance gardens, this home offers coastal charm and modern comfort. Just 7 minutes to Brunswick Heads for river SUP, beaches, surf, boutiques, cafes, restaurants, and lively entertainment-coastal living at its best!-Indulge in tranquillity within a secluded cul-de-sac, surrounded by serene bushland offering a peaceful retreat-Situated on a private 937m2 block, this high-set, pole home offers scenic views extending to the blue expanse of the ocean beyond-Coveted north-east orientation, ensuring ample year-round sunlight and gentle sea breezes for an enhanced lifestyle-Well laid out kitchen featuring ample bench space and a breakfast bar, equipped with a high-quality stainless steel Smeg oven-The functional internal laundry provides access to a screened patio and the rear of the property-The open plan living/dining area showcases a wood fireplace and high raked ceilings creating a warm and spacious ambiance-Large sliding patio doors enhance the open-plan living area, facilitating cooling cross-breezes, complemented by reverse cycle air conditioning in the westerly facing bedroom/office-Modern ensuite and family bathroom boasting luxurious deep bathtub -Under-house covered parking is available for two cars along with additional storage space with ample scope to build a granny flat (STCA)-The low-maintenance tiered gardens, adorned with blond gravel and striking black retaining walls, showcase a sophisticated aesthetic accentuating the verdant surroundings-Centrally positioned: 5 mins to New Brighton, 7 mins to Brunswick Heads, 20 mins to Byron Bay, and 33 mins to the Gold Coast, providing easy access to a range of coastal destinations