

21 Devon Park Drive, Highton, Vic 3216



House For Sale

Thursday, 19 October 2023

21 Devon Park Drive, Highton, Vic 3216

Bedrooms: 4

Bathrooms: 2

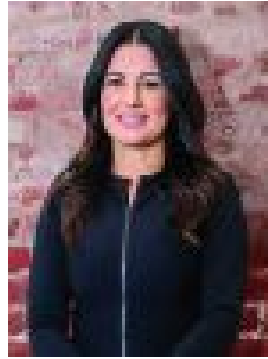
Parkings: 2

Area: 543 m2

Type: House



David Cortous
0416164336



Candice Costoso
0431577870

\$980,000 - \$1,050,000

Set over a generous flat block of 543sqm (approx.) of land this modern family home is meticulously presented both inside and out and is perfect for those looking for value in ever popular Highton. This immaculately kept home boasts four bedrooms plus study nook, the master suite with a large walk-in robe and ensuite and a modern central bathroom with a striking free-standing bath to service the family. The home has two living zones, the large open plan kitchen/meals/living room is stunning in design with a chic modern kitchen complete with white stone bench tops, large walk-in pantry and a 900ml European oven perfect for the avid cook. The stunning timber floors flow seamlessly through the home and the neutral tones reflect plenty of natural light creating a beautiful environment for all. The timber slats and the modern Euro-style fireplace are the showpiece of the main living hub. The large outdoor deck is perfect for entertaining friends and family and overlooks the rear yard, landscaped gardens, and veggie patch. With all mod cons available including heating/cooling, feature fireplace and remote panel lift door to the double garage with internal access the lucky purchaser has nothing left to do other than move in and enjoy the luxuries of this magnificent home. With stunning native gardens, and just 20 minutes to Torquay Beach, this beautiful home provides its new owner with tranquility and lifestyle conveniences. Located in an outstanding location in ever-popular Highton with all amenities on the doorstep including Barrabool Hills Plaza, cosmopolitan Highton Village, schools, public transport, sporting facilities and easy access to the Ring Road for the Melbourne commuter. - Master bedroom with walk-in robe and ensuite - Two living zones and stunning timber floors throughout - Large designer kitchen with walk-in butler's pantry - Extensive backyard and landscaped gardens - Double garage with internal access