

21 Eliza Terrace, Officer, Vic 3809

Sold Residential Land

Friday, 1 September 2023

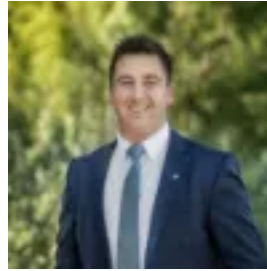
21 Eliza Terrace, Officer, Vic 3809

Area: 331 m2

Type: Residential Land



Ash Thompson
0398706211



Alan Hodges
0398706211

\$352,000

Presenting a superb opportunity for those looking to design and build a brand new family home, this clear and level 331sqm block boasts a sought-after north-south orientation. This newly released land opportunity is positioned just a short stroll from the brand new Kurmile Primary School, ready to welcome students for the start of the upcoming school year. Buses, Pioneer Way Park and Gilbert Reserve are also within easy walking distance, with Officer Station also just a few minutes' drive away, allowing effortless city access for commuters. Zoned for Officer Secondary College, the block is also in easy reach of Minaret College, Beaconhills College, Hillcrest Christian College and St Francis Xavier College Officer Campus. An array of local shopping options are available, with Lakeside, Officer and Beaconsfield shopping centres close by, while an array of parklands, walking trails, restaurants and wineries are within easy driving distance. A brand new sporting complex is also underway within walking distance, creating a truly enviable location for family living.