

21 Galah Drive, Tamworth, NSW 2340

Sold House

Friday, 1 September 2023

21 Galah Drive, Tamworth, NSW 2340

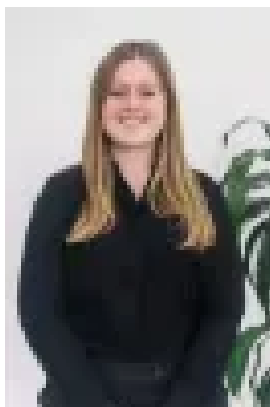
Bedrooms: 4

Bathrooms: 2

Parkings: 2

Area: 737 m2

Type: House



Tara Barwick
0267637000

\$670,000

Welcome to 21 Galah Drive. This stunning four bedroom, two bathroom house situated on a 737sqm block is the perfect family home. Boasting a modern design with sleek finishes and ample natural light, the living areas are open plan, creating a seamless flow between the kitchen, dining, and living areas. The bedrooms are generously sized and feature built-in wardrobes with the master bedroom encompassing an ensuite and walk-in wardrobe, providing a private retreat for the owners. The property also includes a double lock up garage, providing secure parking for two vehicles. The outdoor area is perfect for entertaining, with a spacious backyard and a covered patio area. Located in the desirable Lampada Estate in Calala, only minutes to the CBD, close to schools and shops. Don't miss out on the chance to make this stunning property your new home. Contact Amy Hughes on 0417 666 773 or Tara Barwick on 0447 532 513 to arrange your inspection.