

21 Gillibri Crescent, Sawtell, NSW 2452

House For Rent

Tuesday, 23 April 2024

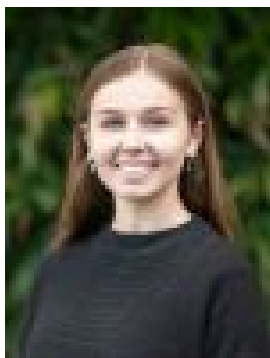
21 Gillibri Crescent, Sawtell, NSW 2452

Bedrooms: 3

Bathrooms: 1

Parkings: 2

Type: House



Sera Large

0266500655

\$600 Weekly

This well maintained three bedroom family home is located on a quiet street and only a moments drive to multiple restaurants, cafes, boutiques and beaches in Sawtell Village. • Bright and Spacious living/dining area with air-conditioning • Three sun filled bedrooms, master bedroom with air conditioning • Eat-in kitchen with excellent storage and a dishwasher • Front and rear decks overlooking a lovely level backyard • Huge double lock up garage • Sorry no pets • 6 month lease ONLY To submit an application please visit our website www.nolanpartners.com.au. 1. Select the property you wish to apply for via the 'Lease' menu. 2. Below the property address, select 'Apply Now'. 3. You will then be redirected to our online application form.