

21 Godfrey Glade, Schofields, NSW 2762

House For Sale

Friday, 5 April 2024

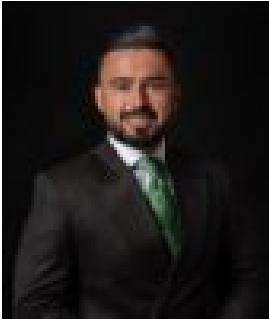
21 Godfrey Glade, Schofields, NSW 2762

Bedrooms: 4

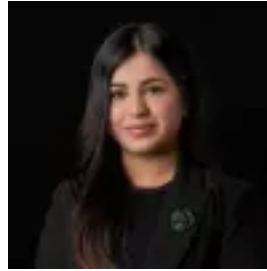
Bathrooms: 2

Parkings: 2

Type: House



Amit Kumar
0288964336



Siya Sachdeva
0288964336

For Sale \$940,000 - \$960,000

This home is conveniently nestled within very short proximity to local parks, Schofields Train Station, Tallawong Metro Station, local shopping centers, as well as within the Riverbank Public School and The Ponds High School catchment. It boasts an exceptional quality of living, with exquisite space, tastefully designed interiors, and something for everyone in the family. Beyond the walls of this property, you will find yourself in a vibrant and family-friendly neighborhood. With a versatile floorplan, the interior is truly second to none, combining the living room, dining, and kitchen area with a seamless flow to the covered alfresco, perfect for enjoying time with your loved ones. There is also a front-facing lounge room as you enter the home offering a multi-zone living experience. Natural light floods between spaces and escapes out to its low-maintenance leveled backyard, perfect for relaxing or hosting gatherings with friends and family. The modern kitchen is well-appointed and features high-quality stainless steel appliances, a stone waterfall benchtop, a five-burner gas cooktop and 600mm oven, tiled splashbacks, stylish lights, an eat-in breakfast bar as well as plenty of storage space. Accommodation consists of four well-sized bedrooms, all with built-in robes. The master bedroom features a private ensuite bathroom. Both bathrooms have been completed with floor-to-ceiling tiles and quality finishes. Features you will love:- 2nd Allocated car space- LED and stylish lights throughout the home- Ducted air-conditioning- Floorboards throughout the home- Two full bathrooms with floor-to-ceiling tiles- Powder room downstairs- Single lock-up garage with internal access and full wall-to-wall built-in storage- One car space out front- Solar panels 6.6 KW- Wonderful community and low Strata- Strata: \$238 per quarter Location highlights:- 5 minutes' drive to Schofields Train Station and Tallawong Metro Station- 5 Minutes' drive to Schofields Shopping Village- 10 minutes' drive to Rouse Hill Town Centre- Short walk to The Ponds High School and Riverbank Public School- Short walk to Beacon Park- Within a short distance to Childcare Centres and Medical Centres Disclaimer: All information contained herein is obtained from property owners or third-party sources which we believe are reliable. We have no reason to doubt its accuracy; however, we cannot guarantee it. All interested persons should rely on their inquiries.