

21 Graduate Street, Truganina, Vic 3029



Sold House

Friday, 10 May 2024

21 Graduate Street, Truganina, Vic 3029

Bedrooms: 4

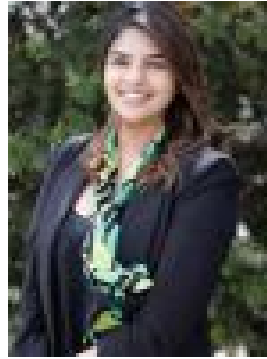
Bathrooms: 2

Parkings: 2

Type: House



Mukesh Kumar
0387441370



Amy Nair
0499101111

\$630,000

Reliance Real Estate, Tarneit is proud to present 21 Graduate Street to the market! Ideally located in the Collage Green Estate, with easy access to several schools such as Westbourne Grammar and Al Taqwa College only a five-minute drive away, as well as very close to St Clare's Catholic Primary School, Truganina P-9 College, Thomas Carr College, St James Primary School, Arndell State Primary and more. For commuters it is only a 10 mins drive to Tarneit Train Station OR Williams Landing Train Station. Furthermore, you can enjoy access to shopping and local services with Wyndham Village and Williams Landing shopping Centre all close by. The curbside appeal alone of this home shows how meticulously maintained and well cared for this property has been. The front garden has been elevated and covered with artificial grass with staired decking leading to front porch and the main entrance. Upon entry, the high ceilings, floorboards and flexible layout will further add to your love of this home. At the front of the home is the master bedroom with a generously sized walk-in-robe as well as ensuite. The tiled ensuite comes with a shower and laminate finished vanity paired with a mirror splash back. Moving further through the home you will find the remaining three bedrooms all with built-in-ropes and easy access to the central bathroom. The family bathroom has both a shower and bathtub, with a separate toilet for more convenient living. The laundry room is well spacious and external access to backyard with a security fly screen for safety. The open plan living and dining area is overlooked by the modern kitchen. The L-shaped kitchen has a kitchen island, perfect for a breakfast bar, with stone countertops, complemented with a tiled splash back and quality appliances. The stainless-steel appliances include a 900mm stove-top and oven, rangehood and a dishwasher. There is also a built-in-pantry, as well as ample storage found within the cupboards. Other great features of this home include: + Remote controlled double garage with polished concrete flooring and internal access + NBN connected. + floorboards + Ducted heating and evaporative cooling + LED downlights throughout + underlay carpets in the bedrooms This home will sell quickly, so call Amy Or Mukesh and book an inspection today!