

**21 Jesray Street, Birkdale, Qld 4159**

**Sold Residential Land**

Saturday, 17 February 2024



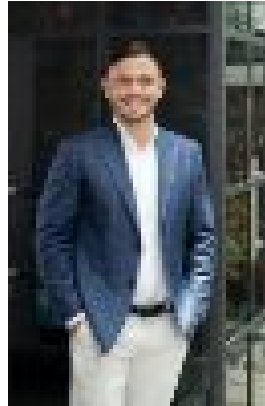
21 Jesray Street, Birkdale, Qld 4159

Area: 507 m2

Type: Residential Land



Jardin Bylund  
0413511644



Luke Rissman  
0413503739

**\$630,000**

BE QUICK TO SECURE YOUR DREAM BAYSIDE LIFESTYLE !507m<sup>2</sup> flat block with generous 10.9m frontage!Build your dream home in the central and convenient bayside location just minutes from major shopping precinct, cinemas, a selection of quality colleges and schools, transport and beautiful Moreton Bay with its many and varied leisure activities and easy access to our fantastic Bay Islands. The 507 square metre flat, level block sits in a quiet cul-de-sac with a generous 10.9m frontage in a boutique size development less than 50 metres from Bailey Road Park with its basketball and exercise facilities and lush green space for children to run and play. Redland City has acres of parkland and recreation facilities, kilometres of walking tracks and bike trails, sandy beaches in both Wellington Point and Raby Bay and numerous boat ramps to launch your pleasure craft.House and Land Packages Available!!INVEST IN YOUR FAMILY'S FUTURE...A BRILLIANT LIFESTYLE AWAITS.