

21 Keith Bain Crest, Whitlam, ACT 2611

VERV

Sold House

Friday, 11 August 2023

21 Keith Bain Crest, Whitlam, ACT 2611

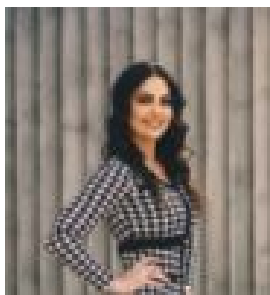
Bedrooms: 5

Bathrooms: 3

Parkings: 2

Area: 624 m2

Type: House



Alysia Walsh
0400880915



Jason Roses
0431419847

Contact agent

Executive living with extreme elevation, all within a picturesque setting, this impressive, newly completed 5-bedroom residence is the first of its kind for the suburb of Whitlam. This stunning Hamptons-inspired home offers a perfect blend of contemporary design and timeless elegance. Wake up to gorgeous morning sunrises and unwind with breathtaking afternoon sunsets from the comfort of your own home. The elevated and generous 624m² block sets the stage for panoramic views that stretch across the majestic Molonglo Valley and Denman Prospect. 21 Keith Bain Crest will transport you into a world of sophistication as you admire the sleek, modern joinery and fittings reminiscent of the Hamptons. With a sprawling 340m² of living space under the roofline, this home provides an abundance of room for relaxation and entertainment. Upon the entry you are greeted by a breathtaking curved feature wall adorned with beautiful timber paneling, adding a touch of artistry to the ambiance. Experience the joy of North-facing living areas that bask in natural sunlight, including two of the five luxurious bedrooms. The open plan kitchen is a culinary haven, complete with a large (powered) stone island bench and exquisite timber finishes. Discover the hidden gem of a butler's pantry, boasting a wraparound bench, a window that captures the surrounding greenery, ample storage, plus an additional sink, ensuring both functionality and style. Indulge in the opulence of the master bedroom suite, featuring a generous walk-in robe and a twin vanity ensuite that exudes elegance. The guest bedroom suite offers its own private ensuite, providing a welcoming retreat for your visitors and elderly family members. Three additional bedrooms, each with built-in robes, offer comfort and convenience for the entire family. Enjoy separate living areas with stunning views of the surrounding parkland, providing a tranquil escape from the bustle of everyday life. This remarkable property boasts a huge wraparound laundry with an inbuilt mudroom-influenced bench, providing ample space for your laundry needs. Storage will never be an issue with an abundance of storage options throughout the home, including complete under-stair storage. Embrace sustainability with features such as tank power, water & stormwater provisions at 2.2m high above slab level which have been installed. Stay comfortable year-round with Toshiba ducted reverse cycle heating and cooling, ensuring the perfect climate inside your home. Indulge in the ultimate luxury and elevate your lifestyle in this exceptional property. Don't miss the opportunity to own your dream home in the Heights of Whitlam. Contact Alysia or Jason to arrange a viewing and experience the pinnacle of contemporary living!

Some features include:

- Hamptons influenced façade with sleek, contemporary joinery and fittings
- Elevated and generous 624m² block in the Heights of Whitlam
- Set across a huge 340m² of living (under roofline)
- Panoramic views overseeing the Molonglo and across Denman Prospect
- Generous 2.55m ceiling height
- Master suite with generous walk-in-robe and twin vanity ensuite plus heated towel rails and under tile heating
- Guest bedroom suite with own private ensuite
- Three additional bedrooms each with built in robes
- Inbuilt study nook on upper landing
- Engineered oak flooring to lower floor
- 100% wool carpet on upper floor and all bedrooms
- Floor to ceiling tiling to bathrooms
- Double glazing throughout
- Stunning curved feature wall with timber paneling
- Gorgeous morning sunrises and afternoon sunsets
- North-facing living areas and two of the five bedrooms
- Open plan kitchen featuring a large island bench, complete with timber featuring
- Hidden butlers pantry with wrap around bench, ample storage and additional sink
- Separate living areas with views to surrounding parkland
- Huge wrap around laundry with inbuilt mudroom influenced bench
- Huge amount of storage throughout plus complete under-stair storage
- Tank power, water & stormwater provisions at 2.2m high above slab level
- Toshiba ducted reverse cycle heating and cooling
- Electric Instantaneous HWS (29.1kw 3-phase to the Master Ensuite)
- Rheem 400L Electric HWS to service rest of house
- Double lock up garage with internal access and epoxy flooring
- 32Amp power supply on isolation switch & separate circuit for future electric vehicle
- 7.02 kW Solar (18 panels) plus 7 kW 3 Phase Inverter

Year of Build: 2023
EER: 6.9
Block size: 624m²
Total Living: 340m² approx (roofline)
Upper floor: 95m²
approx
Lower floor: 170m² approx
Alfresco: 20m² approx
Garage: 45.35m² approx
Rental Estimate: \$1,150 - \$1,250pw