

# 21 Pleasant Street, South Ripley, Qld 4306



## House For Sale

Friday, 15 March 2024

21 Pleasant Street, South Ripley, Qld 4306

Bedrooms: 4

Bathrooms: 2

Parkings: 2

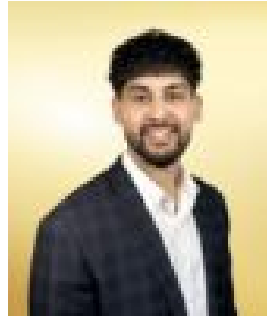
Area: 453 m2

Type: House



Nik Raj

0400678555



Vansh Sikka

0460111555

## Contact the Agent

Discover the epitome of contemporary living in this elevated, fully insulated residence, perfectly positioned in one of South Ripley's fastest-growing corridors. From the sleek exterior to the impeccable interior, this home radiates sophistication and functionality, offering a lifestyle of unparalleled convenience. Step inside to find four spacious bedrooms, all equipped with built-in wardrobes and reverse cycle air conditioning, providing comfort all year round. The master bedroom, secluded from the others, features an ensuite and walk-in robe, ensuring a peaceful retreat. Embrace flexible living with a separate kids nook or additional media, family, or formal lounge room, catering to every member of the family. The heart of the home is the quality spacious kitchen, complete with stone benchtops, stainless steel appliances, and ample storage space. Enjoy seamless indoor-outdoor flow with glass sliding doors opening onto the undercover entertainment patio, overlooking the perfectly private grassed backyard.. a haven for kids and pets alike.

**Property Features:**

- Spacious entertainment and living areas
- 4 spacious bedrooms with built-in wardrobes and reverse cycle air conditioning
- Separate kids nook or additional media, family, or formal lounge room
- Master bedroom with ensuite and walk-in robe
- Quality spacious kitchen with stone benchtops and stainless steel appliances
- Solar panels 5kw system and natural gas hot water
- LED Lighting, ceiling fans and Screen throughout
- Main bathroom with a lovely bath and separate toilet
- Large walk-through laundry with linen storage
- Fully fenced private backyard
- Double remote-controlled garage
- Low maintenance established garden and landscaping and so much more!

This property is ideally located approximately 40 minutes from Brisbane and 15 minutes from Ipswich, this property offers tranquility in a quiet street while remaining close to essential amenities. With Ripley Valley State School and Secondary College just minutes away, along with Ripley Shopping Centre and multiple parks within easy reach. **Location Features Include:**

- 2 Mins walk to the playground
- 4 Mins away from Ripley valley state school & secondary college
- 3 Mins away from Splash'n'Play children's parks.
- 7 Mins away from Ripley town centre
- 6 Mins walk to the buses
- 15 Mins away from Springfield Central Railway station
- 15 Mins away from Ipswich CBD

This this home presents an opportunity for effortless family living. Nik Raj on 0400678555 or Call Amar Billabati on 0460111555 to discuss more in detail.

**Disclaimer:** Information provided by RealWay edge, its employees and related parties is a general outline for the guidance of intending purchasers or tenants and does not constitute in whole or in part an offer or a Contract. Reasonable endeavors have been made to ensure that the information given is materially correct, but any intending purchaser or tenant should satisfy themselves by inspection, searches, enquiries, and survey as to the correctness of each statement. We recommend that you obtain financial, legal and taxation advice before making any decision.