

21 Railway Street, Inverleigh, Vic 3321



House For Sale

Wednesday, 7 February 2024

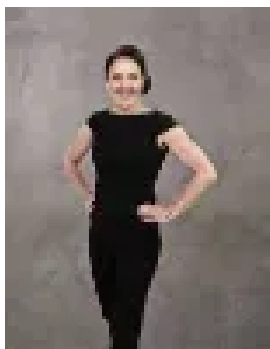
21 Railway Street, Inverleigh, Vic 3321

Bedrooms: 3

Bathrooms: 1

Parkings: 1

Type: House



Michelle Winckle
0352411488



Sophie Spowart
0478957905

\$695,000 - \$745,000

Located in the heart of Inverleigh, this charming cottage is sure to win your heart. Situated on 1,023 corner allotment this fantastic opportunity is close to local school, sporting reserve and cafes, this is country living at its finest. Comprising of 3 bedrooms, the master bedroom has central access to the main bathroom. The beautifully renovated kitchen includes an electric cooktop, farmhouse basin, dishwasher and ample cupboards. The spacious living area is the perfect space for the whole family. Other features of the home include: -Large laundry with external access- backyard includes a shed- reverse cycle air conditioning Situated in the beautiful and picturesque Inverleigh, only 25 minutes from Geelong and 75 minutes to Melbourne. A short stroll and you'll be in the centre of town with trendy cafes, the pub and general store. The sporting reserve is just across the road, hosting a fantastic oval, sporting courts and bowls club, this location has it all! *All information about the property has been provided to Hayeswinckle by third parties. Hayeswinckle has not verified the information and does not warrant its accuracy or completeness. Parties should make and rely on their own enquiries in relation to this property.