

21 Reynolds Road, Wattle Glen, Vic 3096



Sold House

Wednesday, 17 April 2024

21 Reynolds Road, Wattle Glen, Vic 3096

Bedrooms: 5

Bathrooms: 2

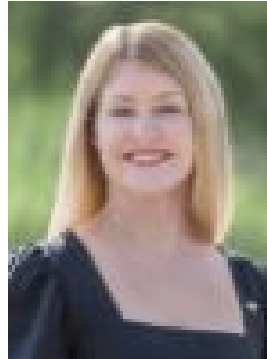
Parkings: 6

Area: 3300 m2

Type: House



Daniel O'Regan
0403662260



Karen Carlson
0417414490

\$1,660,000

AUCTION THURSDAY 2ND MAY AT 6PMSOLD by Jellis Craig. Set upon a sizeable 3300sqm allotment, this charming family home presents an exciting opportunity of unmatched potential. Cleverly designed to accommodate the family lifestyle, this home is the perfect combination of comfort and convenience. Upon entry, immediately feel at home, with spacious and light filled interiors creating a calm and relaxed tone. A sizeable lounge and accompanying gas heater provide the perfect place to cozy up next to in the winter or to unwind after a long day. An open plan kitchen and meals area boasts functionality, complete with ample bench space, stainless steel appliances and stone benchtops, whilst an additional family lounge area provides space for a children's retreat or to entertain guests. Three generous bedrooms are serviced by a central family bathroom. Travel upstairs to find an additional two bedrooms, master suit complete with outdoor balcony creating your own private oasis. Step outside and marvel in the pure bliss that is this home's outdoor area. Envious to any entertainer, a covered alfresco area is accompanied by a fully equipped kitchen and BBQ. Whether you are warming up next to the fire pit in winter or refreshing yourself in the pool during summer, this home has something to offer all year round. Additional property features include four split system units, three gas heaters, floating floor throughout the kitchen and living area, pizza oven and ample options for car parking. An expansive shed is ideal for the keen Tradie, or perfect to store your boat, caravan or passion project. Surrounded by a range of amenities including shops, cafes, walking trails as well as public transport services, there is nothing this home doesn't have to offer. Additionally, the home is only moments away from a range of schools including Wattle Glen Primary School, Hurstbridge Primary School and Diamond Valley Secondary College.