

21 Sanwae Drive, Swan Bay, Tas 7252

McGrath

Sold Residential Land

Tuesday, 19 September 2023

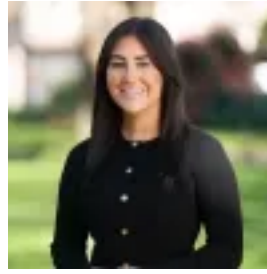
21 Sanwae Drive, Swan Bay, Tas 7252

Area: 1 m2

Type: Residential Land



Josh Hart
0363357400



Tiffany Henricks
0363357400

Contact agent

- A gorgeous lifestyle property to build straight away or hold for the future- Surrounded by quality family residences in a sought-after area- Elevated and corner site provides beautiful views of the Tamar Valley- Capturing all day sun and a 380-degree rural setting, ideal for your dream home - Plenty of space for children to run free and explore on this property- 20 minutes to the Launceston CBD and 15 minutes to Mowbray Shopping