

21 Smithdene Avenue, Ringwood East, Vic 3135



Sold House

Friday, 6 October 2023

21 Smithdene Avenue, Ringwood East, Vic 3135

Bedrooms: 3

Bathrooms: 2

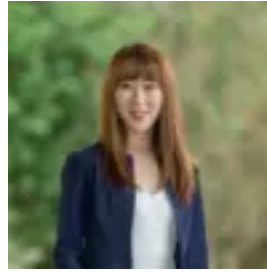
Parkings: 1

Area: 669 m2

Type: House



Neo Wei
0398706211



Nicole Qiu
0398706211

\$1,200,000

Meticulously renovated with a gorgeous modern palette highlighting the light streamed proportions, this single level home delivers unquestionable class and comfort throughout. Walk to Tintern Grammar and Eastwood Primary, and within the coveted Ringwood Secondary College zone. Metres to Railway Avenue shops, cafes and services, along with the newly revamped Ringwood East Train Station. Hardwood engineered floors engage the hall and main living areas, flowing seamlessly into a sun filled living and dining room with original ornate cornicing and sliding opaque glass doors making an attractive inclusion. No expense has been spared with a chic 2-pac kitchen promising luxury with soft-closing, shaker cabinetry doors and brushed nickel handles, sleek Caesarstone benchtops and a stylish splashback. Appointed with new Bosch appliances, including an induction cooktop, undermount rangehood and integrated dishwasher. Three bedrooms with integrated robes have been elevated to a high standard with brand new loop pile carpet. Serviced by a smart Hamptons styled bathroom with wall to wall tiles, rainfall frameless shower and floating stone topped vanity plus Villeroy and Boch toilet. In addition, the laundry has been enhanced with a new fit-out of 2-pac cabinetry including overhead storage, leading out the back door to a generous grassed garden and paved path for BBQs and play space. Freshly painted and appointed throughout with LED lighting, split system heating/cooling, ceiling fan, elegant brushed-nickel tapware and a single garage with ample off-street driveway parking for extra vehicles.

A five minute drive to Croydon Main Street Shops, Eastland, Town Square, Costco and the Eastern Freeway/Eastlink freeway connections. Minutes to Eastfield Road and Bedford Road shopping precincts, Aquahub and Aquanation along with local exercise studios. Walk to East Ringwood Reserve, Karalyka Theatre, Ringwood Lake and Wombolano Park plus several local pocket playgrounds. Nearby to Maroondah Hospital and Ringwood Private Hospital. Great for a young family with no time to renovate or a professional or downsizing couple wanting accessibility to everything and high quality appointments. This is a guaranteed solid investment for a variety of buyers. Ready to move in now!