

21 Springfield Drive, Lochinvar, NSW 2321

Sold Residential Land

Wednesday, 15 November 2023

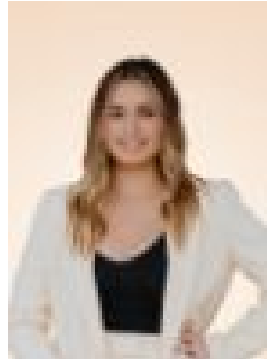
21 Springfield Drive, Lochinvar, NSW 2321

Area: 547 m2

Type: Residential Land



Nick Clarke
0240043200



Courtney Lantry
0240043200

\$340,000

What an amazing chance to start building your dream home today in the highly sought-after Hereford Hill Estate Lochinvar. One of the most prestigious estates around with strong covenants giving you fantastic capital growth over time & in a well-established family friendly area. With a frontage of 13.5m & a depth of 31.77m, this flat parcel of land certainly offers it all. Registered and ready to start building today, lock in your fixed build prices and miss out on the unknown price rises waiting for unregistered land to be ready. Another HUGE advantage this block is west facing for an abundance of natural light throughout your home all day & a sundrenched backyard. Lochinvar is home to the sought after St Joseph's College & St Patrick's Primary School just 2-minutes away, along with Lochinvar pub, convenience stores, sporting fields & a huge amount of development planned for this area. You are also 10mins to Maitland CBD, 20mins to Hunter Valleys beautiful Vineyards & 40mins into Newcastle CBD. These flat, west facing blocks are extremely hard to find so don't miss out, contact your team at Clarke & Co today for your site information. Block size – 547.8 sqm Frontage – 13.5m Depth – 31.77m Aspect – West-facing frontage Why you'll love where you live; - Located just 20 minutes from the newly refurbished destination shopping precinct, Green Hills shopping centre, offering an impressive range of retail, dining and entertainment options right at your doorstep. - 15 minutes to Maitland CBD, boasting a vibrant restaurant scene along the newly revitalised Levee riverside precinct. - 5 minutes from schools, Homemakers centre, 3 major supermarkets, sporting fields, bowling clubs, pubs, restaurants etc. - 5 mins to St Joseph's College & St Patrick's Primary school Lochinvar - 45 mins to Newcastle CBD & beautiful beaches - 15 mins to the Hunter Valley Vineyards - 2 hours to Sydney - 1 hour to the pristine shores of Port Stephens ***Health & Safety Measures are in Place for Open Homes & All Private Inspections Disclaimer: All information contained herein is gathered from sources we deem reliable. However, we cannot guarantee its accuracy and act as a messenger only in passing on the details. Interested parties should rely on their own enquiries. Some of our properties are marketed from time to time without price guide at the vendors request. This website may have filtered the property into a price bracket for website functionality purposes. Any personal information given to us during the course of the campaign will be kept on our database for follow up and to market other services and opportunities unless instructed in writing.