

21 Tadji Close, Croydon North, Vic 3136



Sold House

Thursday, 17 August 2023

21 Tadji Close, Croydon North, Vic 3136

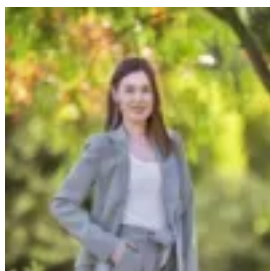
Bedrooms: 3

Bathrooms: 2

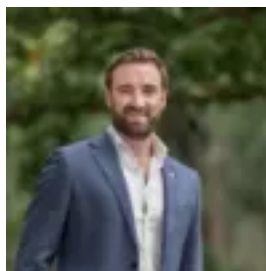
Parkings: 2

Area: 815 m2

Type: House



Erin McDougall
0398706211



Daniel Broadbent
0398706211

\$1,200,000

Elevated amidst verdant landscaped native gardens, this beautifully presented Lucas Morris home showcases enchanting leafy outlooks from each window, with an inviting sense of light and space throughout. Poised at the head of a peaceful cul-de-sac, the home is mere metres from lush Tadjji Close Reserve parkland, and also just moments from buses, Croydon Hills Primary School, Yarrunga Reserve walking trails, Chirnside Park Shopping Centre, Croydon Station, Jefferies Providore, and an array of quality local and independent schools including Yarra Valley Grammar and Luther College. A generous formal living and dining room boasts an open fireplace and a lofty pitched ceiling with elegant clerestory windows, while also showcasing stunning panoramic views encompassing the Dandenongs. A spacious separate family room features floor-to-ceiling windows, flowing out to a sundrenched paved patio framed by family-friendly lawn, with colourful established gardens hosting abundant native birdlife. The oversized central kitchen comprises ample storage including a walk-in corner pantry, thoughtful additional task lighting, a stainless steel dishwasher, a large gas cooktop, a servery window to the outdoor dining patio, and a breakfast bar for casual meals. Secluded at the entry, the master bedroom includes a walk-in wardrobe and a bright ensuite with frameless glass shower, and opens directly out to the private back garden. Two additional bedrooms are each equipped with built-in wardrobes, and are complemented by a family bathroom with a separate bathtub and a separate W/C. Featuring gas ducted heating, split system air conditioning, ceiling fans, external shade blinds, a full laundry with direct outdoor access, and excellent inbuilt storage, the home also includes a substantial powered lock-up workshop with concrete slab floor, an additional garden shed, a remote double lock-up garage with internal access, and additional off-street parking ideal for a third car, caravan or trailer.