

21 Walana Street, Geilston Bay, Tas 7015

RIPPLE

Sold House

Monday, 14 August 2023

21 Walana Street, Geilston Bay, Tas 7015

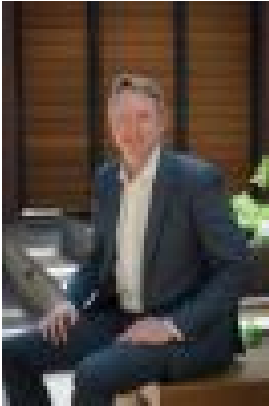
Bedrooms: 3

Bathrooms: 1

Parkings: 2

Area: 711 m2

Type: House



Warwick Page
0362280895

\$700,000

Located in an elevated position in the sought-after suburb of Geilston Bay, this beautifully presented property offers a low-maintenance lifestyle with an array of desirable features - including light-filled living spaces, ample sleeping quarters, and glorious views over Hobart. Here you will find a quiet and convenient lifestyle within easy reach of all the amenities of the Eastern Shore. The spacious open plan living area and master bedroom have been thoughtfully designed with large windows and a northerly aspect that create sun-drenched, warm and comfortable rooms with a sweeping outlook over the rooftops of Geilston Bay, the Derwent River and to kunanyi/Mt Wellington. What a spectacular sight to wake up to each morning, or to spend your relaxed evenings admiring the city lights below! Additionally, the living space includes a reverse cycle air conditioner, plenty of room for dining, a well-equipped kitchen with heaps of storage space and brand-new benchtops, plus a skylight enhances the already well-lit area. The three double bedrooms all have new blinds and generous built-in storage, including a walk-in wardrobe in the master bedroom and a two-way family bathroom that serves as a convenient ensuite to the main bedroom as well. Under the house is a secure single garage with extra storage, and the 711sqm block is a neat, low-maintenance space. The whole block is fenced, so is ideal for children and pets to play safely, or you could consider landscaping to accommodate easy access vegetable or flower gardens, if so inclined. A lot of this property's appeal is its convenient location near a number of reputable schools, parks, and a short five-minute drive to local Geilston Bay shops or quaint Lindisfarne Village, plus the many other facilities in close proximity. Hobart's CBD is a short 15-minute drive away and there is a regular bus service along Walana St. Quiet, convenient and close to everything you need - this exceptionally well-presented family home is a fantastic opportunity. Whether you are a first home buyer or searching for a long-term family residence, it is sure to impress. Contact Warwick today to arrange a time to view! We have obtained all information in this document from sources we believe to be reliable; however, we cannot guarantee its accuracy. Prospective purchasers are advised to carry out their own investigations.