

21005/11 Beesley Street, West End, Qld 4101



Flat For Rent

Friday, 24 May 2024

21005/11 Beesley Street, West End, Qld 4101

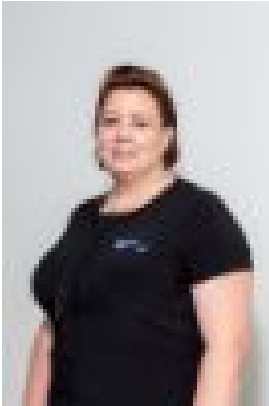
Bedrooms: 2

Bathrooms: 2

Parkings: 1

Area: 81 m2

Type: Flat



Belinda Eacott
0412564144

\$780 per week

Discover the perfect blend of contemporary design and low-maintenance living in this exclusive apartment. Boasting suburbia and river views to the southwest, this residence is flooded with natural light throughout the day, creating a bright and inviting atmosphere. Generously Sized: Spacious interiors carefully designed for comfort and style. Modern Design: Contemporary aesthetics and high-quality finishes throughout. Natural Light: Large windows ensure the apartment is bathed in natural light. Suburbia & River Views: Enjoy picturesque views from the comfort of your home. Light & Co Development: Located within the prestigious Light & Co development, residents will benefit from an executive lifestyle with resort-style amenities, including: Elegant Complex: Modern architecture with stylish interiors. Resort-Style Amenities: Access to top-tier facilities enhancing your living experience. Property Highlights: - Located on 10th Floor- A well appointed kitchen opening to a combined lounge dining area, leading out to the covered balcony, this property allows plenty of natural light. - 2 Bedrooms - each with build-in mirrored robes and air conditioning- Ensuite off the master bedroom- Separate bathroom with concealed laundry- Single carspace in secure parking- Access to Swimming pool and gym facilities Just 5 a minute walk to the local bus stop Within Brisbane State High catchment Contact us or register online for an inspection. PLEASE NOTE: You MUST register & confirm to attend a property inspection. If no tenants are confirmed the Property Manager will not attend the inspection.