

211/33 Port Drive, Airlie Beach, Qld 4802



Unit For Sale

Thursday, 30 November 2023

211/33 Port Drive, Airlie Beach, Qld 4802

Bedrooms: 3

Bathrooms: 2

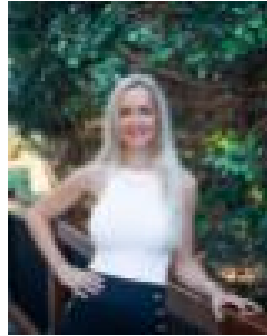
Parkings: 2

Area: 169 m2

Type: Unit



Stephanie McWhirter
0749488500



Clarice Davis
0749488500

Offers

This stunning waterfront apartment is so close to the water, you'll feel like you can reach out and touch the ocean. The Boathouse apartments are one of the regions most premier apartment addresses and this beautiful property offers the very best marina and ocean views. This property is not your typical Boathouse apartment. Some of the benefits that U211 offers in comparison to other apartments in the building include the end of building position offering plenty of natural light in every bedroom, a superior sized floor plan (169sqm), only one adjoining neighbour and the north facing aspect that ensures the cool sea breezes that prevail for most of the year. The furnished property is comfortable in size and ideally can be used for permanent living or you can holiday let via the full time onsite managers, The Boathouse Apartments, who currently look after the property for the owners. The bedrooms are all generous in size with brand new beds, the kitchen with a brand new fridge and bathrooms are well appointed with only the best fixtures and appliances and the views from the apartment are sensational. The apartment has all new flooring throughout. You can step out of your unit and onto your boat with the Port of Airlie Marina at your doorstep. Access to the apartment is extremely convenient with an elevator that takes you from the undercover car park in the basement, directly to the apartment door. If you are cautious about your privacy and security, only guests and residents with swipe cards can access this secure complex. The Boathouse Airlie Beach offers a full size tennis court, resort style outdoor pool, direct access to the marina, restaurants, bars and retail shopping all on the ground floor. The ferry terminal within the marina provides transfers to Hamilton Island Airport so access to and from Brisbane, Sydney and Melbourne airports is effortless. You will not find a more desirable place to live than "The Boathouse" the with convenience of overlooking the Port of Airlie Marina and out to the Whitsunday Islands and being only a one minute stroll to the main street of Airlie Beach.