

# 213 The Esplanade, Indented Head, Vic 3223

## House For Sale

Friday, 15 March 2024



213 The Esplanade, Indented Head, Vic 3223

**Bedrooms: 3**

**Bathrooms: 1**

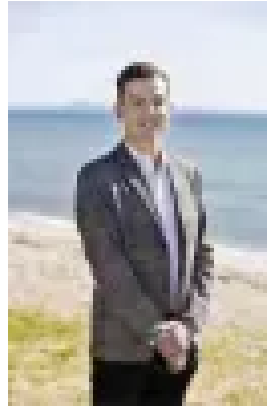
**Parkings: 2**

**Area: 557 m2**

**Type: House**



Luke Campbell  
0352571778



Bailey Grace  
0352571778

## **EPR \$1,100,000-\$1,200,000**

Nestled along the picturesque shores of Port Phillip Bay, this immaculate beachfront property is the perfect entrance to Esplanade living. The home features a large living area which merges seamlessly to an expansive patio with stunning views of Port Phillip Bay and the Melbourne CBD. The kitchen boasts generous bench space for meal preparation and an abundance of storage options with its ample cupboards and drawers. Three spacious bedrooms, each adorned with built-in robes offer space for the entire family. The property features side access to a concreted backyard. The double car garage offers space for secure parking of your vehicles and belongings. A superb residence and an address that is second to none; 213 The Esplanade, Indented Head awaits a winning bid!