

214/360 St Kilda Rd, Melbourne, VIC, 3000

MELBOURNE LIVING
ST KILDA ROAD

Sold Apartment

Friday, 12 May 2023

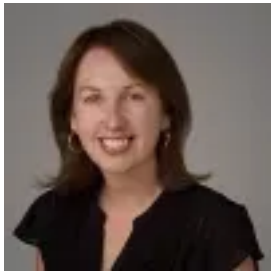
214/360 St Kilda Rd, Melbourne, VIC, 3000

Bedrooms: 1

Bathrooms: 1

Parkings: 1

Type: Apartment



Angela Davidson
0396823713

A Brilliant Lifestyle Base in the Botanic Gardens precinct

Boasting a prestigious address in the Royal Domain Plaza, this elevated apartment along with its deep covered entertaining terrace is an abode of genuinely generous dimensions.

Opened up to create a bright contemporary feel, the interior spaces include an inviting living and dining room, kitchen with Smeg cooking appliances and drawer dishwasher, bedroom with built-in robes and ensuite bathroom, concealed European laundry, and the advantage of a powder room for your visitors.

Additional appointments include video-monitored entry, panel heaters and Aircon system, a car space, on-site cafés and access to a communal waiting room and library.

Ideally positioned in one of Melbourne's most beautiful tree-lined boulevards, directly opposite the Royal Botanical Gardens, on the doorstep of trams, the upcoming Anzac Station and a short commute to the CBD's vibrant shops, eateries and entertainment, this is a home that ticks all the right boxes for savvy investors, first home buyers or those looking for a centrally located inner-city base.