

**214 Pebbly Hill Road, Cattai, NSW 2756**

PROPERTY

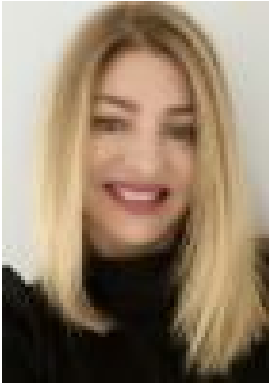
**Residential Land For Sale**

Monday, 3 June 2024

214 Pebbly Hill Road, Cattai, NSW 2756

Area: 2 m2

Type: Residential Land



Sue Lobsey

## JUST LISTED

Elevate your lifestyle with this exceptional offering: approximately 6.4 arable acres with two road frontages in sought-after Cattai. Escape the hustle and bustle and immerse yourself in the idyllic surroundings of lush greenery and picturesque landscapes. Benefit from the convenience and flexibility of two road frontages, enhancing accessibility and potential. Corner of Pebbly Hill & Reedy Road. Immerse yourself in a community of quality homes, where tranquillity meets convenience, offering the perfect backdrop to build your dream home and new beginnings. Approx 5 minutes from Pitt Town - 10 minutes from the new Box Hill City Centre - 15 minutes from Windsor Town - 20 minutes from Rouse Hill Town Centre - 15 minutes from Glenorie Village - 30 minutes from Dural Round Corner - 1 hour from the CBD. Agent discloses this property is affected by a gas easement.