

215/1454 Pacific Highway, Turrumurra, NSW 2074



Sold Apartment

Friday, 22 September 2023

215/1454 Pacific Highway, Turrumurra, NSW 2074

Bedrooms: 2

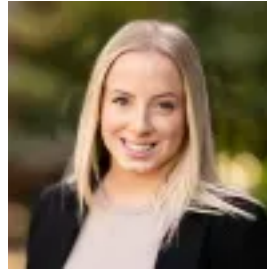
Bathrooms: 2

Parkings: 1

Type: Apartment



Domenic Maxwell
0294897474



Mia Kennedy
0294499066

Contact agent

Showcasing spacious, open plan design as its centrepiece, this impressive apartment is a stunner, enjoying easy level access in 2019 built 'Ashton Hill'. Impeccably presented, it rests back from the road, overlooking greenery and promising a peaceful, ultra convenient lifestyle. The design is outstanding with every room flowing out to the substantial entertainer's balcony. Timeless and luxury in its fit out and finish, it includes a superb stone, gas and Miele island kitchen and designer bathrooms. A study nook area is tucked away, opening to reveal a great work from home space with storage. Enjoy the spoils of a Turrumurra lifestyle being an easy walk to bus services, Warrawee Public School, Turrumurra Station and village, Knox Grammar and Abbotsleigh. Accommodation Features: * Spacious, welcoming interiors, chic engineered flooring * Generous open plan living, dining and luxury gas kitchen * Stunning kitchen boasts an island and Miele appliances * All key rooms open to the balcony, hidden study/storage * Ducted a/c, two generous bedrooms open to the balcony * Both bedrooms with robes, master retreat with an ensuite * Internal laundry, two superb contemporary bathrooms External Features: * Level access from the street and parking * Set back in the block for peace and privacy * Video intercom and lift access * Green outlook, large entertainer's balcony * Communal gardens and terrace with built-in barbeque facilities * On-site building manager * Single security car space, storage cage, visitor parking Location Benefits: * 573 bus services to Turrumurra and Sydney Adventist Hospital almost at the entry to the complex * 600m to Turrumurra Station and village * 350m to Warrawee Public School * 850m to Knox Grammar * 1.5km to Turrumurra Park * 1.5km to Abbotsleigh * Close to a choice of golf courses Contact Domenic Maxwell 0434 537 577 Disclaimer: All information contained here is gathered from sources we believe reliable. We have no reason to doubt its accuracy however we cannot guarantee it.