

**216/61 Supple Road, Waterloo Corner, SA 5110**



**Retirement Living For Sale**

Thursday, 18 January 2024

216/61 Supple Road, Waterloo Corner, SA 5110

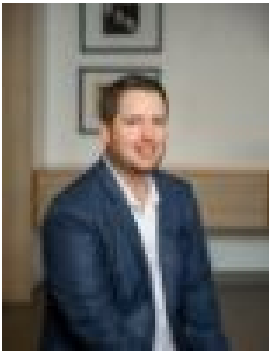
**Bedrooms: 3**

**Bathrooms: 2**

**Parkings: 2**

**Area: 148 m2**

**Type: Retirement  
Living**



Steve Spurling

0421571682

**\$399,000 - \$429,000**

Tucked Away at the end of a quiet street in the Palms Residential Park is this surprisingly spacious 3 bedroom home which will allow those over 50 to not compromise when downsizing. The home is immaculately presented and the features include but are not limited to:- 3 Spacious Bedrooms - The master featuring ensuite (a rarity in the Palms) a walk in robe and bay window.- Spacious living & dining rooms with raised ceiling rooms giving the impression of space.- Kitchen with beautiful splashbacks and ample cupboard and bench space.- Sparkling main bathroom which has been recently renovated.- The home wraps around its own outdoor undercover entertaining area, the perfect place to entertain your family and friends year round.- Ducted reverse cycle air conditioning with the ability to be zoned to keep you comfortable year round.- 6.6kw Solar system and Heat pump hot water easing the pain of soaring electricity Prices.-Ample storage with a large walk-in linen press and walk in closet from the laundry.-Beautiful neutral tones throughout.-Under cover double length carport with roller door and lock up tool shed for the handyman.All of this and more is located in the Palms Residential Park.The Palms Residential Park is you're affordable over 50's residential village. With homes for the budget-minded and for those who appreciate real value without compromising quality, you will be delighted with what The Palms offers. Here you have the freedom to personalize and customize your home to your tastes. The Palms is a residential village and with extensive recreational facilities, there's "something for everyone"Nestled on the outskirts of Virginia, The Palms has developed a beautiful, secure, peaceful environment infused with a lively community spirit.For more information on this beautiful home, The Palms Residential Park or for a Private inspection of the homes available and tour of the Palms give Steve a Call today.RLA 232366