

217/1 Lusher Road, Croydon, Vic 3136



Sold Apartment

Friday, 29 September 2023

217/1 Lusher Road, Croydon, Vic 3136

Bedrooms: 3

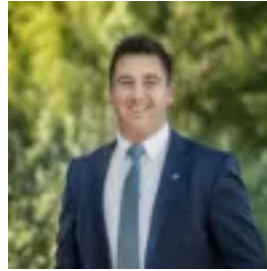
Bathrooms: 2

Parkings: 1

Type: Apartment



Ash Thompson
0398706211



Alan Hodges
0398706211

\$640,000

Poised high within the acclaimed new Orphic development, this impeccably presented apartment residence showcases exquisite luxury finishes across a surprisingly generous floorplan. Boasting sweeping panoramic views encompassing distant mountain ranges, the expansive undercover alfresco area promises relaxed year-round outdoor dining and entertaining. Situated just a short stroll from vibrant Croydon Main Street shopping, Civic Square, Aquahub and Swinburne University, the apartment is also within easy walking distance of Croydon Station, both Tarralla Creek and Carrum-Warburton Trails, and an array of local parks and sporting facilities. Featuring premium wide engineered oak timber flooring, the open plan living and dining area is awash with abundant natural light. A full wall of double-glazed stacker doors flows seamlessly out to an impressively proportioned alfresco area, offering plenty of space for outdoor living and barbecues, and showcasing sweeping easterly views across the three mountain ranges. The stylish contemporary kitchen comprises stone waterfall benchtops, a chic smoked mirror splashback, fridge plumbing, an Ilve 900mm electric oven and 900mm gas cooktop with wok burner, a breakfast bar for casual meals, and ample soft-close cabinetry with numerous deep and shallow drawers. The king sized master bedroom includes mirrored built-in wardrobes and a luxe ensuite with floor-to-ceiling feature tiling, a stone vanity, recessed LED lighting, an oversized frameless glass walk-in waterfall shower, and generous mirrored shaving cabinet storage. Two additional bedrooms are each equipped with mirrored built-in wardrobes, and are complemented by an identical second bathroom plus a large stone laundry with excellent storage. The two largest bedrooms each also offer direct access to the alfresco area. Double glazed throughout for year-round tranquillity and climate comfort, the apartment also features split system heating and air conditioning, sleek modern ceiling fans in all bedrooms, elegant full height sheer drapery, roller blinds, remote video intercom entry and secure carspace plus two large storage cages on title. Residents enjoy access to stylish communal spaces including a meeting / reading room with gas log fireplace and wet bar, plus facilities including courtesy trolleys and carts, and upcoming office and retail spaces. Offering excellent peace of mind, Croydon Police Station is directly across the road, and Maroondah Public Hospital is also just a five minute drive away.