

**217/33 Port Drive, Airlie Beach, Qld 4802**



**Sold Unit**

Friday, 23 February 2024

217/33 Port Drive, Airlie Beach, Qld 4802

**Bedrooms: 2**

**Bathrooms: 2**

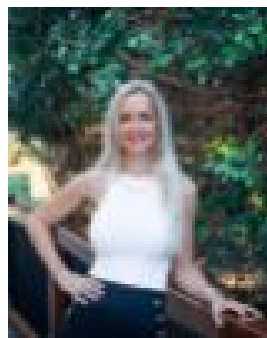
**Parkings: 1**

**Area: 114 m2**

**Type: Unit**



Stephanie McWhirter  
0749488500



Clarice Davis  
0749488500

**\$980,000**

Waterfront Luxury, Coastal Bliss Wake to pristine ocean views and experience the ultimate in coastal living at this newly renovated 2-bed, 2-bath waterfront retreat in the heart of the Whitsundays, enjoy the breath-taking views from the master bedroom's private balcony. This luxurious oasis in the renowned Boathouse complex overlooks the serene Airlie Marina and offers timber flooring, ducted AC, and contemporary design. The open-plan living, kitchen, and dining areas connect seamlessly to a large balcony for unforgettable gatherings. Amenities include swipe-card access, underground carpark, pool, tennis court, and BBQ facilities. Whether you're seeking a lifestyle investment, a holiday escape, or a permanent residence, this location offers unparalleled access to the Whitsunday Islands, the Great Barrier Reef, and is walking distance to restaurants, shops, and the beach, with the Cruise Whitsunday ferry terminal nearby. This tropical haven is also just 35 mins from the Whitsunday Coast Airport.