

218 Limeburners Creek Road, Limeburners Creek, NSW 2324



Sold Lifestyle

Saturday, 28 October 2023

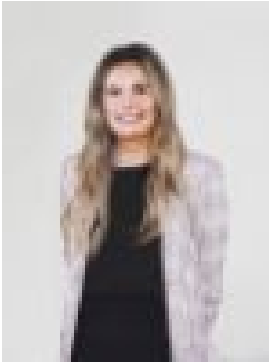
218 Limeburners Creek Road, Limeburners Creek, NSW 2324

Bedrooms: 6

Bathrooms: 2

Parkings: 10

Type: Lifestyle



Jess Kearney

Contact agent

For sale via Expressions of Interest closing Thursday, 19th October at 4pm. Ideally located just 5 minutes from the Pacific Highway in the coveted Limeburners Creek area, this expansive 190-acre* property, 'Killarney,' is now being offered to the market. After generations of ownership by the one family, this former quarry is now an almost blank canvas ready for you to make your own. Perfect for a weekend escape, building your dream country home (STCA), or somewhere for the kids to be able to enjoy the great outdoors on their horse or motorbike. 'Killarney' accommodates two original farm cottages with a picturesque rural outlook, large open bay machinery shed (30m x 19m), timber cattle yards, 8 stock dams, and double frontage to Limeburners Creek, ensuring water security for potential livestock. A network of internal 4WD tracks invite you to explore every corner of the property which is divided into 12* paddocks with approximately 40% cleared, and the rest adorned with timber. The property also neighbours the Karuah National Park, the perfect place for mountain biking, bush walking, fishing and 4WDing. Key features:- 190* Acres of peaceful and private land- Large open bay machinery shed- 2 farm cottages with shedding- 7 Acre* unlicensed quarry- Zoned RU2 Rural Landscape*Disclaimer*All areas and figures are approximate only. All precaution has been taken to establish the accuracy of the above information but does not constitute any representation by the Vendor or Agents. It is recommended that all interested parties conduct their own due diligence.