

# 219 Midson Road, Epping, NSW 2121



## House For Sale

Thursday, 1 February 2024

219 Midson Road, Epping, NSW 2121

Bedrooms: 4

Bathrooms: 1

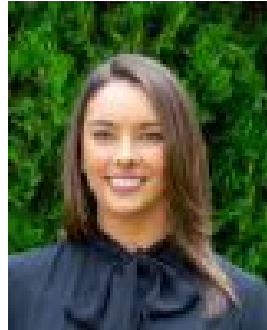
Parkings: 2

Area: 1234 m2

Type: House



Allison Mifsud  
0405138408



Danielle Jenkins  
0459341200

## **Auction 24/02/24 On Site at 10am**

Experience timeless charm in this period-style weatherboard house in Epping, perched at one of the highest points and offering an abundance of opportunities. Situated on an impressively large block size of approx. 1234sqm with a frontage of 20.27m allowing potential to renovate, further enhance or redevelop.\* Perfect building block, no easements, high side\* Quaint front entertaining veranda + entry foyer\* Four spacious bedrooms, two with ceiling fans\* Formal lounge room with air conditioning\* Separate dining room, rear sitting room\* Neat kitchen with dishwasher overlooks the rear yard\* Bathroom with separate shower and bathtub\* Potential to knock down and redevelop\* Convenient to Epping rail and Carlingford village shops\* Zoned for Cheltenham Girls, Carlingford High and Roselea Primary